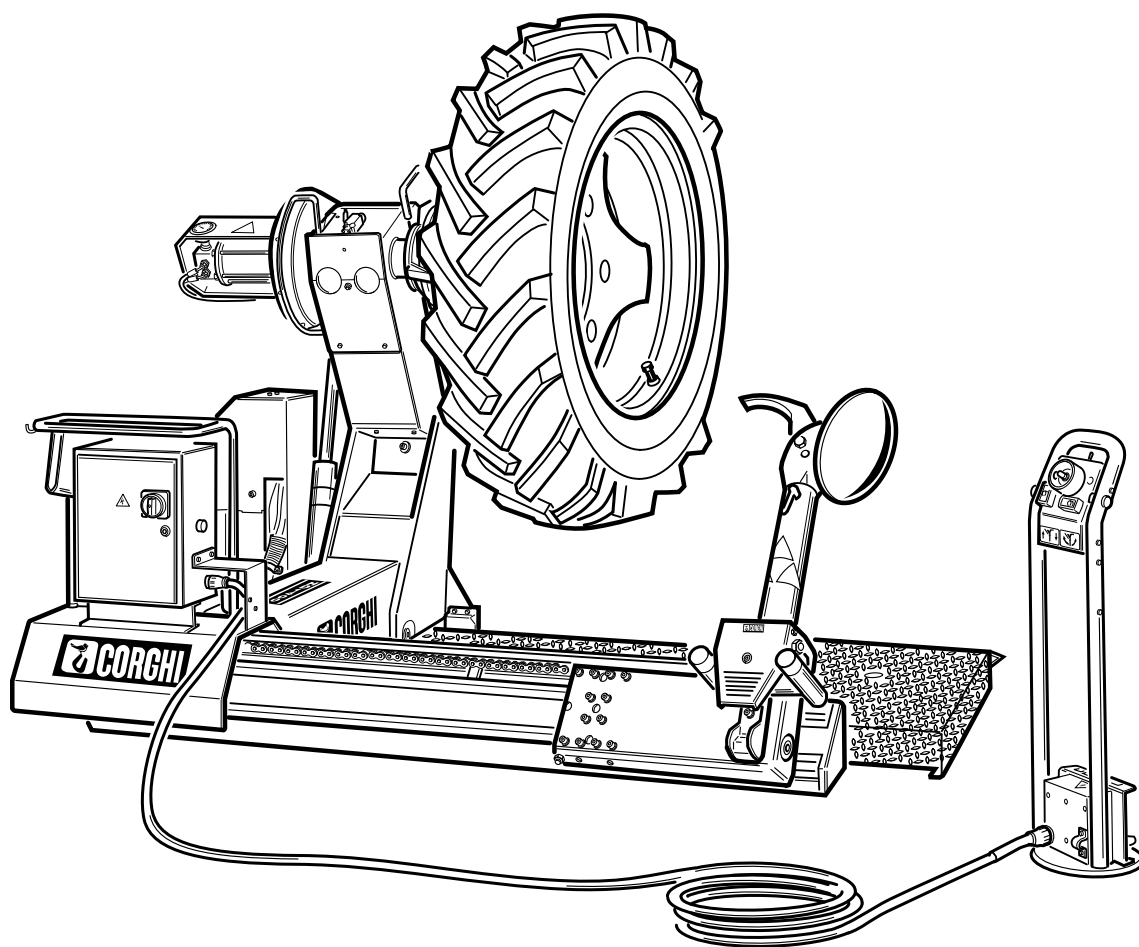


Questo libretto non autorizza l'utente ad intervenire sulle macchine ad esclusione di quanto esplicitamente descritto nel Manuale d'uso, ma consente all'utente di fornire informazioni precise all'Assistenza tecnica, al fine di ridurre i tempi di intervento.

HD1200 E (2005)

The "Spare parts" booklet does not authorize the user to carry out work on the machine unless expressly specified in the instruction manual, but does enable him to provide accurate information to the assistance service in order to reduce downtime.

PEZZI DI RICAMBIO SPARE PARTS LIST ERSATZTEILLISTE PIECES DE RECHANGE



Code

4-327961D

Production from

07 / 2012

Der Katalog Ersatzteile stellt keine Genehmigung zu eigenmächtigen Eingriffen dar (mit Ausnahme jener im Handbuch beschriebenen), sondern er soll den Anwender in die Lage versetzen, dem technischen Service präzise Informationen zu liefern, um die Reparaturzeiten zu verkürzen.



Le livret "Pièces de rechange", n'autorise pas l'utilisateur à intervenir sur les machines, sauf pour tout ce qui est clairement décrit dans le manuel d'utilisation, mais lui permet de fournir des informations précises à l'assistance technique, afin de diminuer les délais d'intervention.

I

Sul presente documento sono stati indicati in grassetto i codici che sono variati rispetto a quelli riportati nella precedente versione del 06/11

En

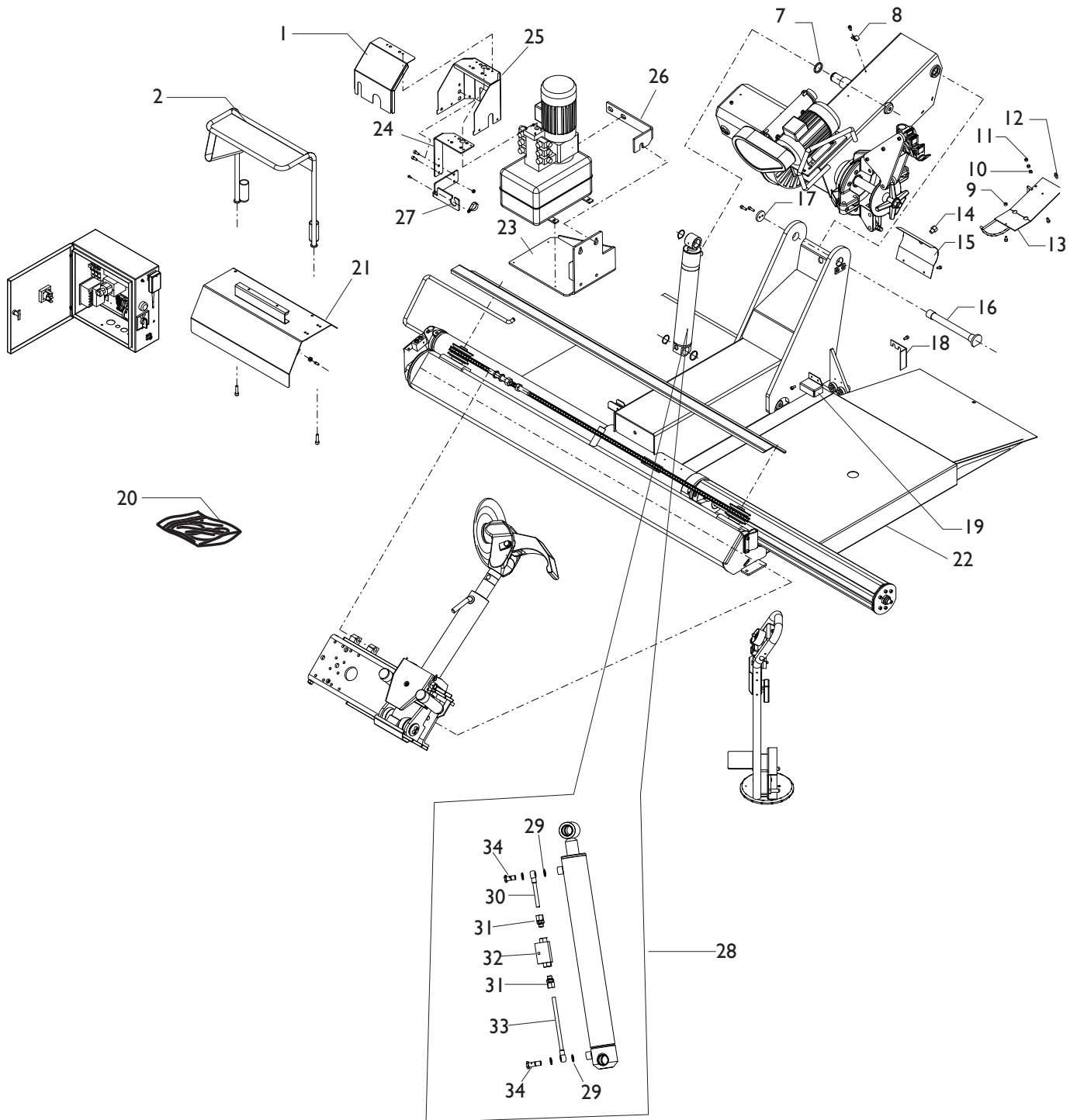
Codes that have changed from those given in the previous version dated 06/11 are indicated in bold type in this document

De

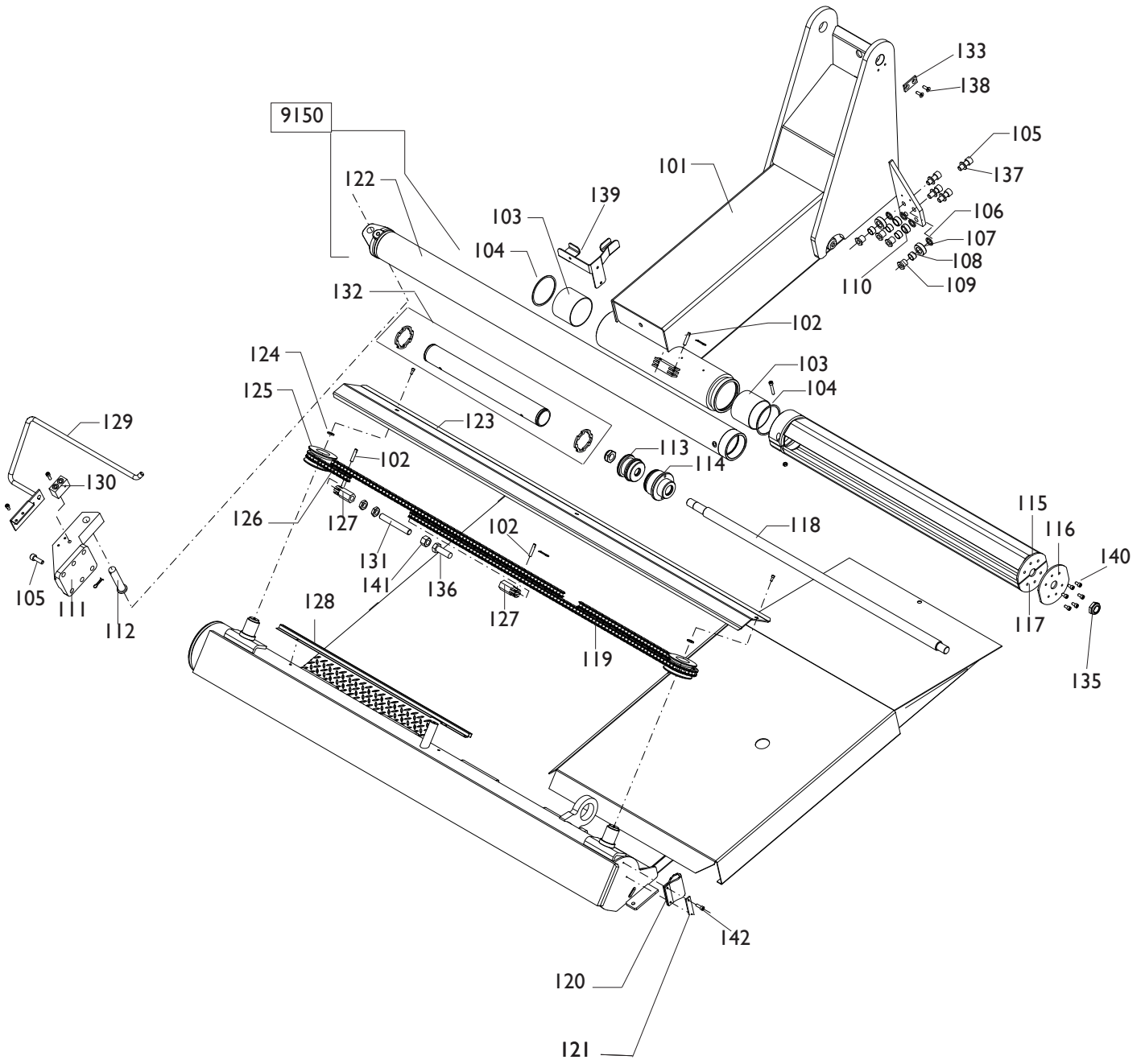
Die gegenüber der Vorgängerversion vom 06/11 geänderten Codes sind im vorliegenden Dokument fettgedruckt angegeben

Fr

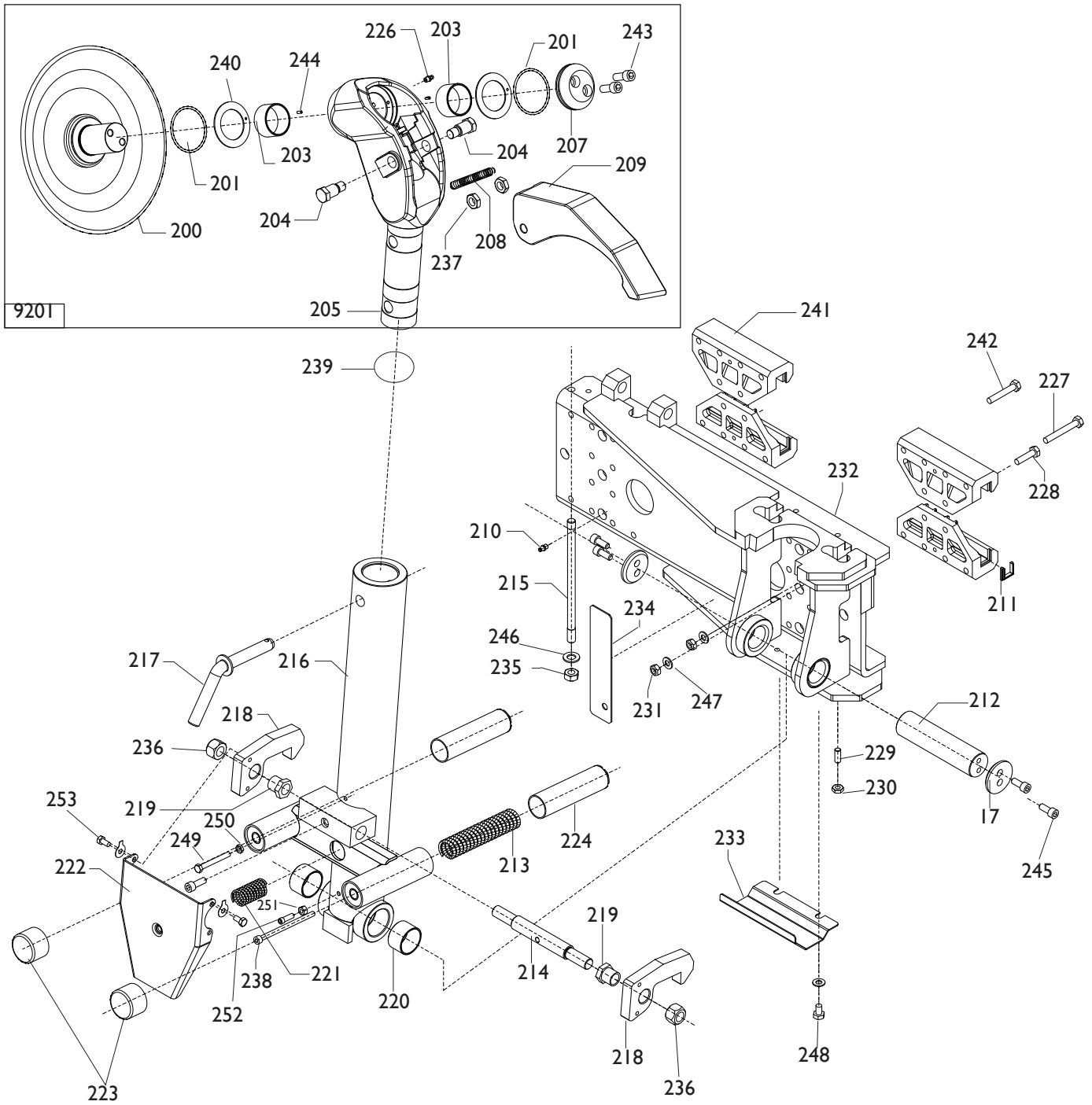
Ce document reporte en gras les codes qui ont été modifiés par rapport à ceux reportés dans la version précédente du mois de 06/11




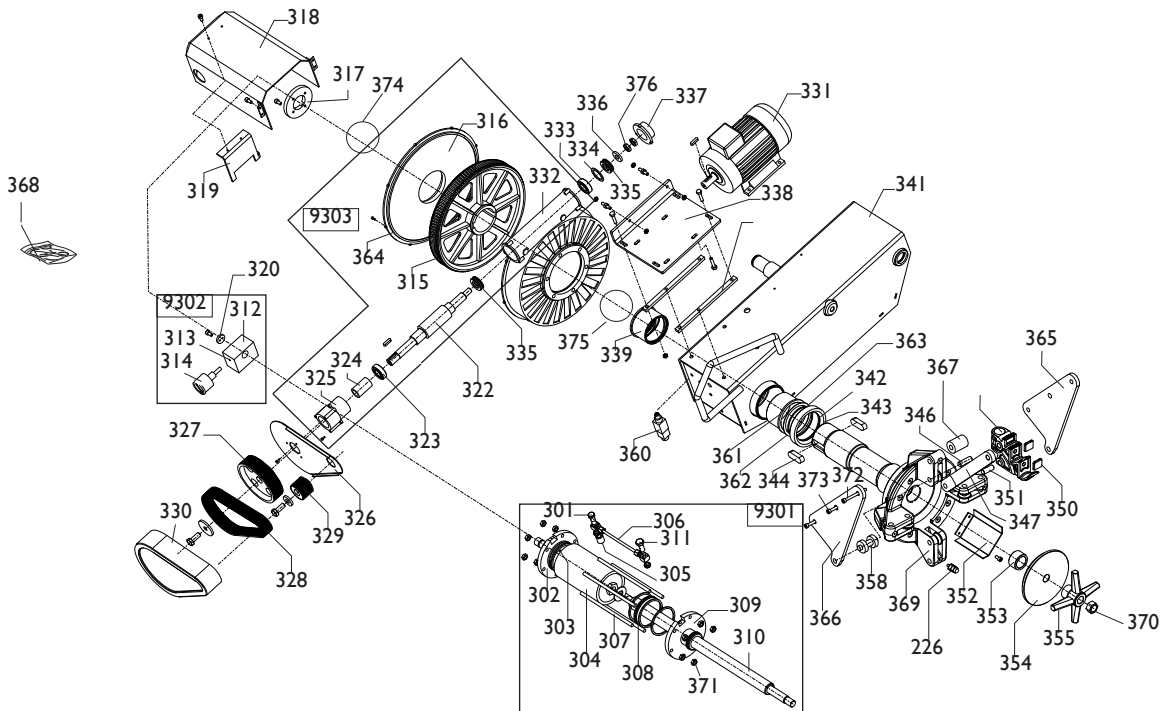
| | | | |
|-------------|-----------------|-------------------------------|--------------------------|
| 0001 | 4-327270 | CARTER ANTERIORE | CASING |
| 0002 | 4-326928 | SUPP. QUADRO EL. | SUPPORT |
| 0007 | 338751 | RONDELLA | WASHER |
| 0008 | 441731 | COLLARE D.25 | COLLIER |
| 0009 | 345883 | CONTRASTO | CONTRAST |
| 0010 | 439697 | MOLLA | SPRING |
| 0011 | 344485 | DISTANZIALE | SPACER |
| 0012 | 443794 | ANTIVIBRANTE | VIBRATION DAMPER |
| 0013 | 245621 | SUPPORTO | SUPPORT |
| 0014 | 435315 | TAPPO | PLUG |
| 0015 | 342409 | PROTEZIONE | SHIELD |
| 0016 | 341680 | PERNO | PIN |
| 0017 | 341681 | RONDELLA PERNO | WASHER |
| 0018 | 342892 | RASCHIAPOLVERE | SCRAPER |
| 0019 | 438544 | CARENATURA | FAIRING |
| 0020 | 242013 | KIT GUARNIZ.CIL.D.70 | SEALS KIT |
| 0021 | 4-326512 | BASAMENTO QUADRO EL. | BAE |
| 0022 | 4-327371 | PEDANA | RAMP |
| 0023 | 4-327202 | SUPP.CENTRALINA | SUPPORT |
| 0024 | 4-327268 | SUPP.CARTER EL. | SUPPORT |
| 0025 | 4-327269 | CARTER POST. | CASING |
| 0026 | 4-327421 | STAFFA FISS.MOTORE | BRACKET |
| 0027 | 4-327424 | STAFFA SUPP.CAVI | SUPPORT |
| 0028 | 5-105073 | CILINDRO SOLL. BR. CPL | CYLINDER ASSEMBLY |
| 0029 | 495678 | RONDELLA 1/4 | WASHER |
| 0030 | 398458 | TUBO D.10 L.55mm | HOSE |
| 0031 | 495779 | RACCORDO 1/4 T.10 | FITTING |
| 0032 | 462559 | VALVOLA RITEGNO | VALVE |
| 0033 | 498418 | TUBO D.10 L.250mm | HOSE |
| 0034 | 495021 | VITE CAVA 1/4 | SCREW |



| | | | |
|-------------|-----------------|----------------------|-----------------|
| 0101 | 4-326672 | BRACCIO | ARM |
| 0102 | 339217 | PERNO CATENA | PIN |
| 0103 | 438762 | BOCCOLA | BUSHING |
| 0104 | 442417 | GUARNIZIONE | SEAL |
| 0105 | 2-01901 | VITE | SCREW |
| 0106 | 338755 | RONDELLA D.22 | WASHER |
| 0107 | 338753 | ROTELLA D.44 | WHEEL |
| 0108 | 3-00622 | BOCCOLA | BUSHING |
| 0109 | 338752 | PERNO ROTELLA | PIN |
| 0110 | 338754 | RONDELLA D.32 | WASHER |
| 0111 | 355058 | APPOGGIO | RIM SUPPORT |
| 0112 | 338732 | PERNO | PIN |
| 0113 | 338682 | STANTUFFO | PISTON |
| 0114 | 338687 | FLANGIA ANT. | FLANGE |
| 0115 | 4-326248 | TIRANTE SUP. | STAY ROD |
| 0116 | 339297 | ANELLO | RING |
| 0117 | 4-326249 | TIRANTE INF. | STAY ROD |
| 0118 | 4-326247 | STELO | STEM |
| 0119 | 439634 | CATENA LUNGA | CHAIN |
| 0120 | 342882 | GOMMA | GUM |
| 0121 | 341448 | TRAFILATO | DRAWN |
| 0123 | 338387 | CARTER CATENA | CASING |
| 0124 | 338712 | RONDELLA D.55 | WASHER |
| 0125 | 240982 | PULEGGIA | PULLEY |
| 0126 | 439633 | CATENA CORTA | CHAIN |
| 0127 | 338733 | TENDITORE | TIGHTENER |
| 0128 | 343022 | PROTEZIONE | SHIELD |
| 0129 | 4-326921 | SUPPORTO | SUPPORT |
| 0130 | 340202 | BLOCCETTO | BLOCK |
| 0131 | 4-326962 | TIRANTE | STAY ROD |
| 0132 | 242401 | GUIDA | GUIDE |
| 0133 | 4-326977 | PIASTRINO ANTIROT. | PLATE |
| 0135 | 2-01902 | DADO M27X2 | NUT |
| 0136 | 2-03308 | VITE M20 | SCREW |
| 0137 | 2-01045 | RONDELLA D.16 | WASHER |
| 0138 | 2-71333 | VITE M8 | SCREW |
| 0139 | 4-326774 | SUPPORTO | SUPPORT |
| 0140 | 2-01906 | VITE M12X25 | SCREW |
| 0141 | 2-01134 | DADO M20 | NUT |
| 0142 | 2-71331 | VITE M5X45 | SCREW |
| 9150 | 4-326244 | CILINDRO CPL D.85 | CYLINDER D.85 |
| 0122 | 4-326245 | FONDELLO CIL. | BOTTOM CYLINDER |



|  | | HD1200 E (2005) | Fig. C | 03A / 10 | Carrrello utensile |
|--|-----------------|----------------------|--------|----------|--------------------|
| 9201 | 5-300321 | UTENSILE | | | TOOL |
| 0200 | 4-329814 | DISCO | | | DISK |
| 0201 | 85600174 | GUARNIZIONE | | | SEAL |
| 0203 | 3-01421 | BOCCOLA D.50X30 | | | BUSHING |
| 0204 | 336480 | FULCRO | | | FULCRUM |
| 0205 | 4-327173 | SUPPORTO | | | SUPPORT |
| 0207 | 4-327271 | RONDELLA DISCO | | | WASHER |
| 0208 | 421596 | MOLLA D.18X65X3,5 | | | SPRING |
| 0209 | 237503 | UTENSILE | | | TOOL |
| 0226 | 429406 | INGRASSATORE M6 | | | LUBRICATOR |
| 0243 | 2-80101 | VITE M12X30 | | | SCREW |
| 0244 | 2-03307 | SPINA D.4X10 | | | PLUG |
| 0210 | 439580 | INGRASSATORE M8 | | | LUBRICATOR |
| 0211 | 438416 | GUARNIZIONE | | | SEAL |
| 0212 | 4-327208 | PERNO BRACCIO | | | PIN |
| 0213 | 437519 | MOLLA D.36X245X5,20 | SPRING | | |
| 0214 | 338461 | PERNO ECCENTRICO | | | PIN |
| 0215 | 342356 | TIRANTE | | | STAY ROD |
| 0216 | 243748 | BRACCIO | | | ARM |
| 0217 | 238138 | FERMO ROTAZIONE | | | RETAINER |
| 0218 | 4-327206 | CRICCHETTO | | | CRICK |
| 0219 | 338463 | BOCCOLA ECCENTRICO | | | BUSHING |
| 0220 | 3-00629 | BOCCOLA D.45X30 | | | BUSHING |
| 0221 | 443754 | MOLLA D.27X82X3,25 | | | SPRING |
| 0222 | 343755 | PEDALE | | | PEDAL |
| 0223 | 443756 | CAPPUCCIO | | | CAP |
| 0224 | 243751 | FODERO PER MOLLA | | | SPRING SHEATH |
| 0017 | 341681 | RONDELLA PERNO | | | WASHER |
| 0227 | 2-03248 | VITE M10X75 | | | SCREW |
| 0228 | 2-03247 | VITE M10X40 | | | SCREW |
| 0229 | 2-01291 | GRANO M10X25 | | | SCREW |
| 0230 | 2-00169 | DADO M10 | | | NUT |
| 0231 | 422289 | DADO M10 | | | NUT |
| 0232 | 4-327209 | CARRELO | | | TROLLEY |
| 0233 | 4-327205 | CARTER PROTEZIONE | | | PROTECTION |
| 0234 | 4-327422 | PIATTO DI CONTRASTO | | | PLATE |
| 0235 | 421674 | DADO M14 | | | NUT |
| 0236 | 422677 | DADO M20 | | | NUT |
| 0237 | 2-03392 | DADO M16X1,5 | | | NUT |
| 0238 | 2-01172 | VITE M8X130 | | | SCREW |
| 0239 | 423781 | OR D.60 | | | OR |
| 0240 | 88910001 | RONDELLA | | | WASHER |
| 0241 | 4-328503 | PATTINO | | | PAD |
| 0242 | 2-01055 | VITE M10X70 | | | SCREW |
| 0245 | 2-01191 | VITE M10X25 | | | SCREW |
| 0246 | 2-00215 | RONDELLA D.14 | | | WASHER |
| 0247 | 2-00213 | RONDELLA D.10 | | | WASHER |
| 0248 | 2-80040 | VITE M10X16 | | | SCREW |
| 0249 | 2-00377 | VITE M8X70 | | | SCREW |
| 0250 | 2-91680 | DADO M8 | | | NUT |
| 0251 | 2-00128 | DADO M8 | | | NUT |
| 0252 | 2-02006 | VITE M8X25 | | | SCREW |
| 0253 | 2-02904 | VITE M8X20 | | | SCREW |

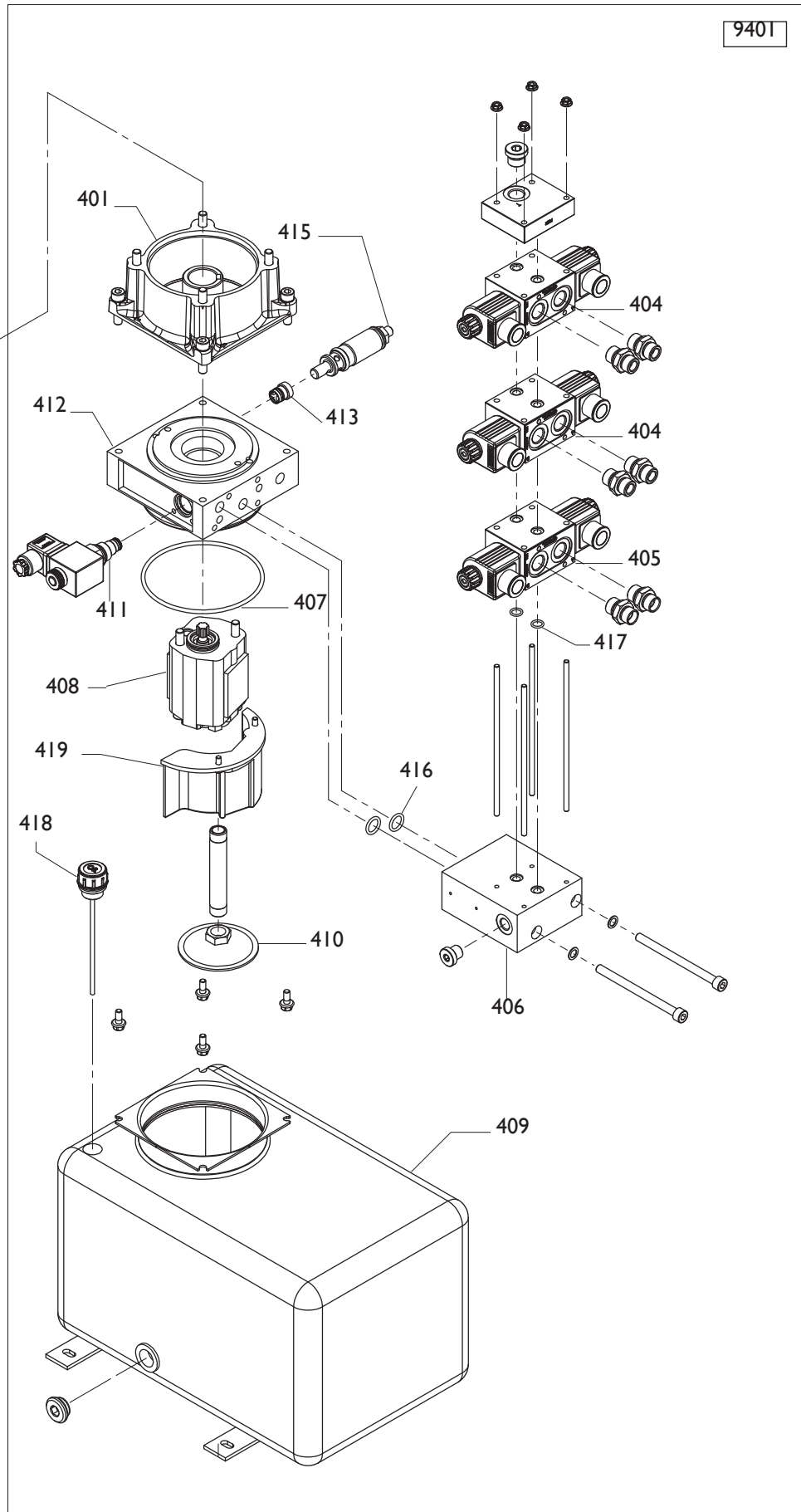


| | | | |
|-------------|----------------|-----------------------------|---------------|
| 0226 | 429406 | INGRASSATORE M6 | LUBRICATOR |
| 0317 | 353343 | FLANGIA BLOC.RUOTA ELIC. | FLANGE |
| 0318 | 253346 | CARTER CILINDRO | CASING |
| 0319 | 339538 | FERMO | RETAINER |
| 0320 | 338778 | RONDELLA FLANG.POST. | WASHER |
| 0322 | 5-327657 | KIT VITE SENZA FINE | SCREW |
| 0323 | 2-00213 | RONDELLA | WASHER |
| 0326 | 353245 | CARTER CINGHIA INF. | CASING |
| 0327 | 355896 | PULEGGIA 60HZ | PULLEY |
| 0328 | 3-00578 | CINGHIA 60HZ | BELT |
| 0329 | 355892 | PULEGGIA 50/60 HZ | PULLEY |
| 0330 | 455891 | CARTER CINGHIE | CASING |
| 0331 | 3-01222 | MOTORE 230V/3/60 | MOTOR |
| 0333 | 2-01034 | CUSCINETTO | BEARING |
| 0334 | 317281 | RONDELLA D.40 | WASHER |
| 0335 | 2-01035 | CUSCINETTO | BEARING |
| 0336 | 3015276 | RONDELLA D.20,2X38X7 | WASHER |
| 0337 | 354875 | FONDELLO ASSE VITE | FLANGE |
| 0338 | 355937 | FLANGIA ATT.MOTORE | FLANGE |
| 0339 | 453344 | BRONZINA CON BATTUTA | BRASS |
| 0340 | 346852 | SUPPORTO | SUPPORT |
| 0341 | 5-300674 | BRACCIO | ARM |
| 0342 | 85600199 | OR | OR |
| 0343 | 4-327054 | ANELLO DIST. | RING |
| 0344 | 2-01162 | LINGUETTA | TANG |
| 0346 | 321564 | SPINOTTO | GUDGEON |
| 0347 | 334163 | BIELLA | TRACE |
| 0348 | 4-326301 | GRIFFA | JAW |
| 0350 | 435441 | TASSELLO | BLOCK |
| 0351 | 334164 | SPINOTTO | GUDGEON |
| 0352 | 341289 | CARTER | CASING |

|  | | HD1200 E (2005) | Fig. D | 03A / 10 | Autocentrante |
|--|-----------------|--------------------------------|--------|----------|--------------------|
| 0353 | 438592 | BRONZINA D.55 | | | BRASS |
| 0354 | 338601 | DISCO | | | DISK |
| 0355 | 338600 | CROCE | | | CROSS |
| 0369 | 5-100600 | MANDRINO | | | SPINDLE |
| 0358 | 334170 | RULLO | | | ROLLER |
| 0360 | 422041 | INTERRUTTORE | | | SWITCH |
| 0361 | 355175 | BRONZINA | | | BRASS |
| 0362 | 354976 | RONDELLA D.118 | | | WASHER |
| 0363 | 85604400 | GUARNIZIONE | | | SEAL |
| 0365 | 4-327972 | PIASTRA DX | | | SLAB |
| 0366 | 4-327971 | PIASTRA SX | | | SLAB |
| 0367 | 4-327973 | DISTANZIALE | | | SPACER |
| 0368 | 242012 | KIT GUARNIZIONI | | | SEALS KIT |
| 0370 | 2-91674 | DADO M22 | | | NUT |
| 0371 | 2-91639 | DADO M12 | | | NUT |
| 0372 | 4-326544 | VITE M16 | | | SCREW |
| 0373 | 4-326543 | VITE M16 | | | SCREW |
| 0374 | 453350 | ANELLO DITENUTA | | | RING |
| 0375 | 358951 | GUARNIZIONE RID/BRACCIO | | | SEAL |
| 0376 | 2-91764 | DADO M20X1,5 | | | NUT |
| 9301 | 5-300417 | CILINDRO D.120 | | | CYLINDER |
| 0301 | 335284 | VITE FORATA 1/8 | | | SCREW |
| 0302 | 338777 | FLANGIA POST. | | | FLANGE |
| 0303 | 440357 | TAPPO | | | PLUG |
| 0304 | 338710 | CILINDRO | | | CYLINDER |
| 0305 | 335283 | PROLUNGA TUBO | | | EXTENSION CORD |
| 0306 | 422674 | TUBO L.240 | | | PIPE |
| 0307 | 334204 | TIRANTE | | | STAY ROD |
| 0308 | 338604 | STANTUFFO | | | PISTON |
| 0309 | 239118 | FLANGIA ANTERIORE | | | FLANGE |
| 0310 | 338599 | STELO | | | STEM |
| 0311 | 322489 | PERNO CORTO | | | PIN |
| 9302 | 239596 | DISTRIBUTORE | | | DISTRIBUTOR |
| 0312 | 440387 | DISTRIBUTORE | | | DISTRIBUTOR |
| 0313 | 459412 | VALVOLA | | | VALVE |
| 0314 | 3-00491 | MANOMETRO D.63 0-250BAR | | | PRESSURE GAUGE |
| 9303 | 260124 | KIT SCATOLA RIDUTTORE | | | TRANSFORMATION KIT |
| 0315 | 341541 | RUOTA | | | WHEEL |
| 0316 | 354213 | COPERCHIO | | | LID |
| 0324 | 354881 | BOCCOLA DISTANZ. | | | BUSHING |
| 0325 | 354876 | FONDELLO ATT.CARTER | | | FLANGE |
| 0332 | 5-300181 | KIT RINFORZO SCATOLA | | | BOX |
| 0364 | 4-329053 | GUARNIZIONE D.407X382X2 | | | RING |

414

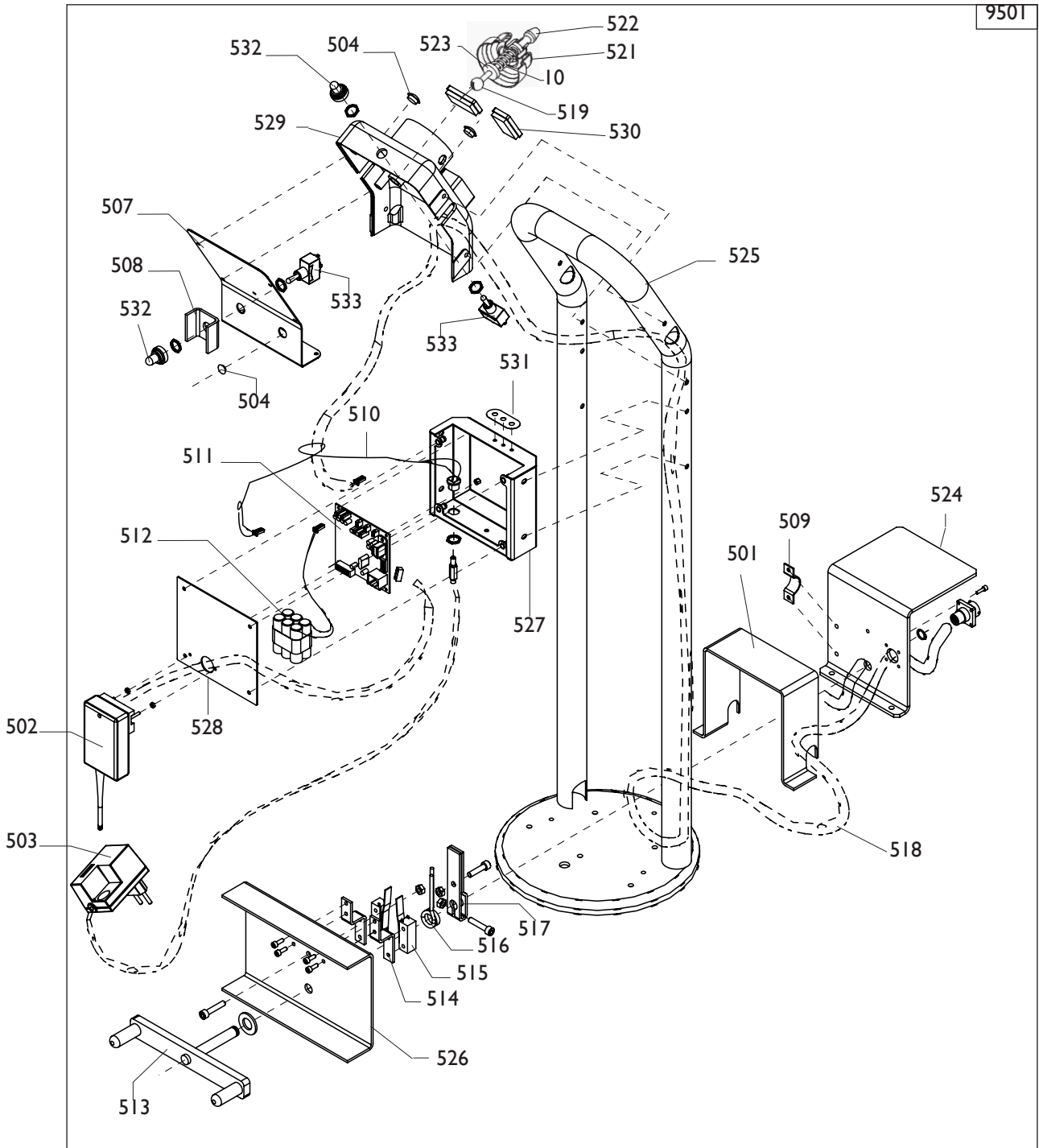
9401



| | | | |
|------|----------|--------------------------------------|-----------------|
| 9401 | 5-300342 | CENTRALINA 60HZ | POWER PACK 60HZ |
| 0401 | 86990252 | KIT DI TRASCINAMENTO | POWER PACK |
| 0404 | 86990304 | DISTRIBUTORE | DISTRIBUTOR |
| 0405 | 86990303 | DISTRIBUTORE | DISTRIBUTOR |
| 0406 | 86990322 | BASE CON FORI M5 <u>FINO A 12/10</u> | BASE |
| 0406 | 4-113049 | BASE CON FORI M6 DA 01/11 | BASE |
| 0407 | 4-330014 | GUARNIZIONE | SEAL |
| 0408 | 4-300013 | POMPA 60HZ | PUMP 60HZ |
| 0409 | 86990320 | SERBATOIO 16LT | TANK |
| 0410 | 86990354 | FILTRO | FILTER |
| 0411 | 4-300015 | ELETTROVALVOLA | SOLENOID VALVE |
| 0412 | 86990222 | CORPO+RITEGNO | BODY |
| 0413 | 86990315 | VALVOLA RITEGNO | VALVE |
| 0415 | 86990208 | VALVOLA DI MAX | VALVE |
| 0416 | 86990355 | OR 3056 | OR 3056 |
| 0417 | 86990133 | OR 2037 | OR 2037 |
| 0418 | 4-300016 | TAPPO+ASTA | PLUG |
| 0419 | 86990351 | KIT COLLETTORE | KIT |

| | | | |
|------|--------|---------------|---------------|
| | MOTORE | MOTOR | |
| 0414 | 445570 | 230V/3ph/60Hz | 230V/3ph/60Hz |

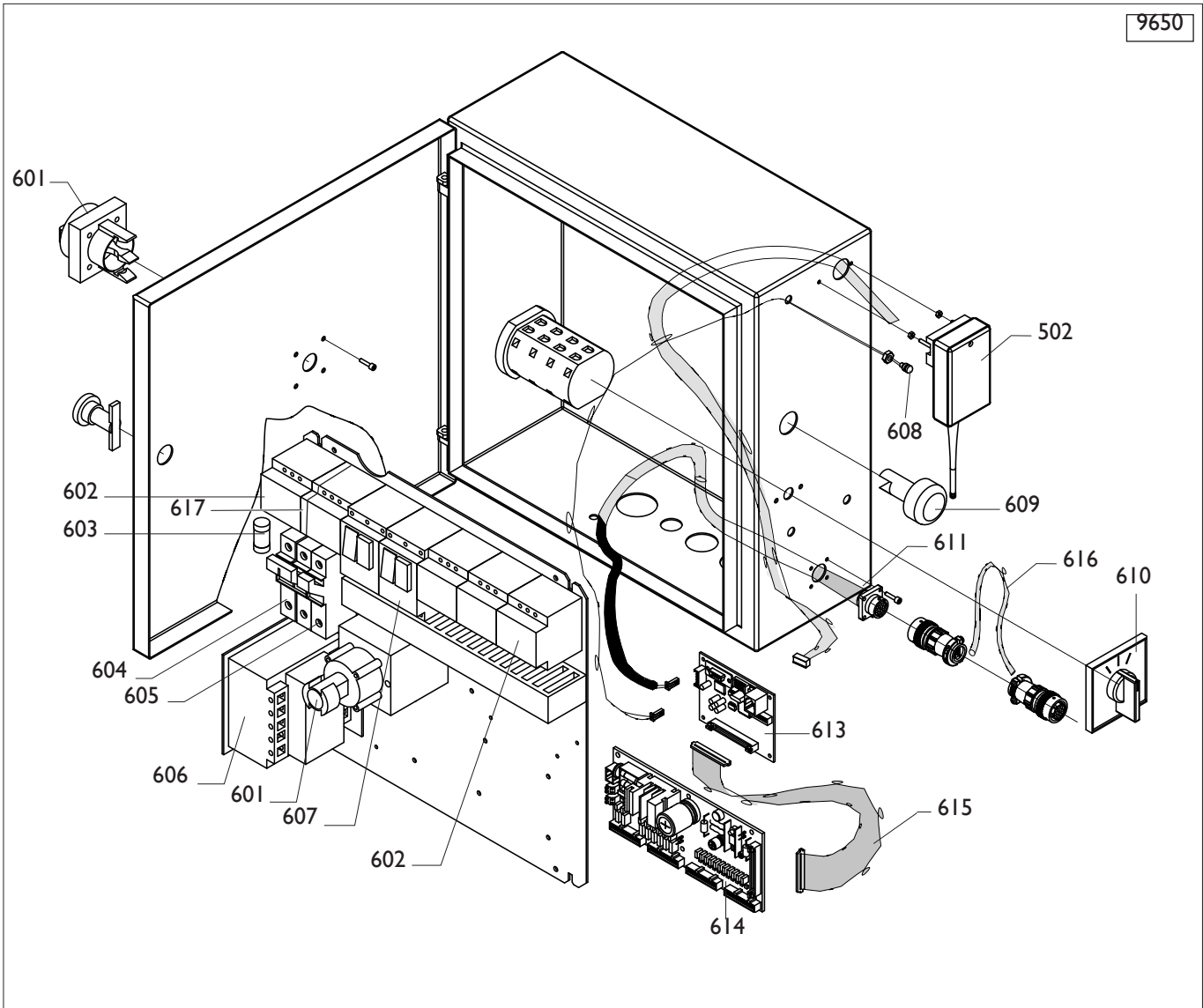
9501



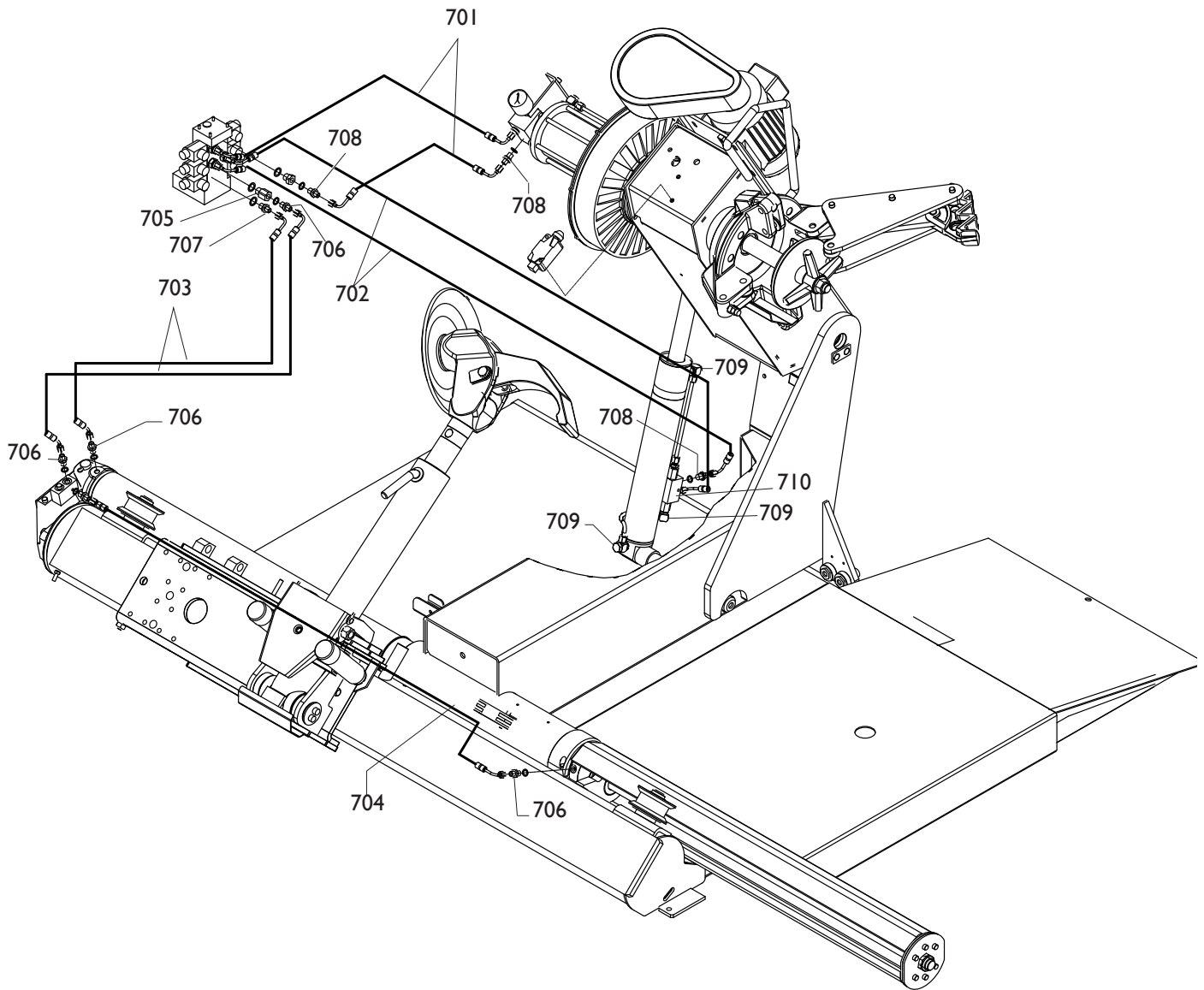
| | | | |
|-------------|-----------------|----------------------------|---------------|
| 9501 | 5-300287 | MANIPOLATORE | MANIPULATOR |
| 0010 | 439697 | MOLLA D.10,2X38X0.9 | SPRING |
| 0501 | 355788 | CARTER PEDALIERA | CASING |
| 0504 | 456036 | TAPPO TONDO | PLUG |
| 0507 | 355779 | COPERCHIO INTERR. | LID |
| 0508 | 340747 | PROTEZIONE DEVIATORE | SHEATH |
| 0509 | 338372 | FASCETTA | STRAP |
| 0510 | 4-327146 | CAVO CARICABAT. | CABLE |
| 0511 | 5-300198 | SCHEDA SPM124C | P.C. BOARD |
| 0512 | 4-327152 | BATTERIA 7,2V 1800MA | BATTERY |
| 0513 | 217479 | PEDALE | PEDAL |
| 0514 | 355786 | STAFFA PORTA MICRO | BRACKET |
| 0515 | 440874 | MICRO I6A+FASTON+LINGUETTA | MICROSWITCH |
| 0516 | 401270 | MOLLA INTERR. | SPRING |
| 0517 | 317491 | LEVA COMANDO MICRO | LEVER |
| 0518 | 4-327073 | CAVO | CABLE |
| 0519 | 339000 | LEVA | LEVER |
| 0521 | 435301 | PROTEZIONE MANIP. | SHIELD |
| 0522 | 355781 | POMOLO | KNOB |
| 0523 | 339002 | GUIDA LEVA COM. | GUIDE |
| 0524 | 4-327187 | PROTEZIONE | PROTECTION |
| 0525 | 4-326251 | PEDALIERA | PEDAL |
| 0526 | 355787 | CARTER PEDALE | PEDAL CASING |
| 0527 | 4-327059 | SCATOLA | BOX |
| 0528 | 4-327176 | COPERCHIO | CUP |
| 0529 | 4-327008 | SUPP.INTERRUT. | SUPPORT |
| 0530 | 456186 | TAPPO | PLUG |
| 0531 | 4-327669 | TARGHETTA LED | LED LABEL |
| 0532 | 4-300096 | CAPPUCCIO | CAP |
| 0533 | 4-300095 | DEVIATORE | SWITCH |

| | | | |
|------|----------|----------------------------|-----------------|
| 0512 | 4-327152 | BATTERIA 7,2V 1800ma | BATTERY |
| 0502 | 5-300221 | Scheda radiomodem | P.C. BOARD |
| 0503 | 4-328832 | CARICABATTERIE 200 ma 230V | BATTERY CHARGER |

9650



| | | | |
|------|----------|------------------------------------|---------------|
| 9650 | 5-300237 | IMPIANTO ELETTRICO CPL 230V/3/60HZ | |
| 0601 | 84700038 | INTERRUTTORE (TLMQ) | SWITCH |
| 0601 | 3-80140 | INTERRUTTORE (AB) | SWITCH |
| 0602 | 84200027 | TELERUTTORE 230V(TLMQ) | REMOTE SWITCH |
| 0602 | 3-80146 | TELERUTTORE 230V(AB) | REMOTE SWITCH |
| 0603 | 84802501 | FUSIBILE 1A | FUSE |
| 0603 | 84802502 | FUSIBILE 2A | FUSE |
| 0604 | 84990781 | SUPPORTO 2POLI | SUPPORT |
| 0605 | 84990775 | SUPPORTO 1POLO | SUPPORT |
| 0606 | 84100056 | TRASFORMATORE | TRANSFORMER |
| 0607 | 84500032 | TERMICA 230V 9-14A (TLMQ) | OVERLOAD |
| 0607 | 3-80147 | TERMICA 230V 9-14A (AB) | OVERLOAD |
| 0608 | 4-327260 | SPIA BIANCA | PILOT LAMP |
| 0609 | 218799 | SPIA LUMINOSA | PILOT LAMP |
| 0610 | 84710027 | COMMUTATORE(TLMQ) | COMMUTATOR |
| 0610 | 3-80141 | COMMUTATORE(AB) | COMMUTATOR |
| 0611 | 4-327072 | CAVO SERIALE RX | CABLE |
| 0613 | 5-300283 | SCHEDA EL.HTCCB | P.C. BOARD |
| 0614 | 5-300190 | SCHEDA EL.EPPB | P.C. BOARD |
| 0615 | 4-327055 | CAVO FLAT 30VIE L.20 | FLAT |
| 0616 | 4-328525 | CAVO COMANDI | CABLE |
| 0617 | 3-03075 | INTERBLOCCO MECCANICO (AB) | OVERLOAD |



| | | | |
|------|----------|----------------------|-----------|
| 0701 | 4-326821 | TUBO L.2000mm | PIPE |
| 0702 | 4-326820 | TUBO L.650 mm | PIPE |
| 0703 | 4-326815 | TUBO L.1750 mm | PIPE |
| 0704 | 4-326816 | TUBO L.1675 mm | PIPE |
| 0705 | 86200136 | RACCORDO 3/8-1/4 | CONNECTOR |
| 0706 | 86200137 | RACC.1/4 | CONNECTOR |
| 0707 | 86200138 | RACC. 3/8 | CONNECTOR |
| 0708 | 86200134 | RACC. 1/4 | CONNECTOR |
| 0709 | 86200066 | RACC.ORIENTABILE 1/4 | CONNECTOR |
| 0710 | 462559 | VALVOLA | VALVE |

Il disegno è realizzato con tutti i particolari ma solo quelli codificati sono forniti come ricambi. L'Azienda si riserva la facoltà di apportare modifiche senza preavviso.



Via per Carpi, n°9 - 42015 Correggio (RE) ITALY
Tel. ++39 0522 639111 - Fax ++39 0522 639150
www.corgi.com - info@corgi.com

The drawing shows all parts but only the coded parts are supplied as spares. The Company reserves the right to make modifications without prior notice.

UTB - Cod.4-327961D - 06/2012