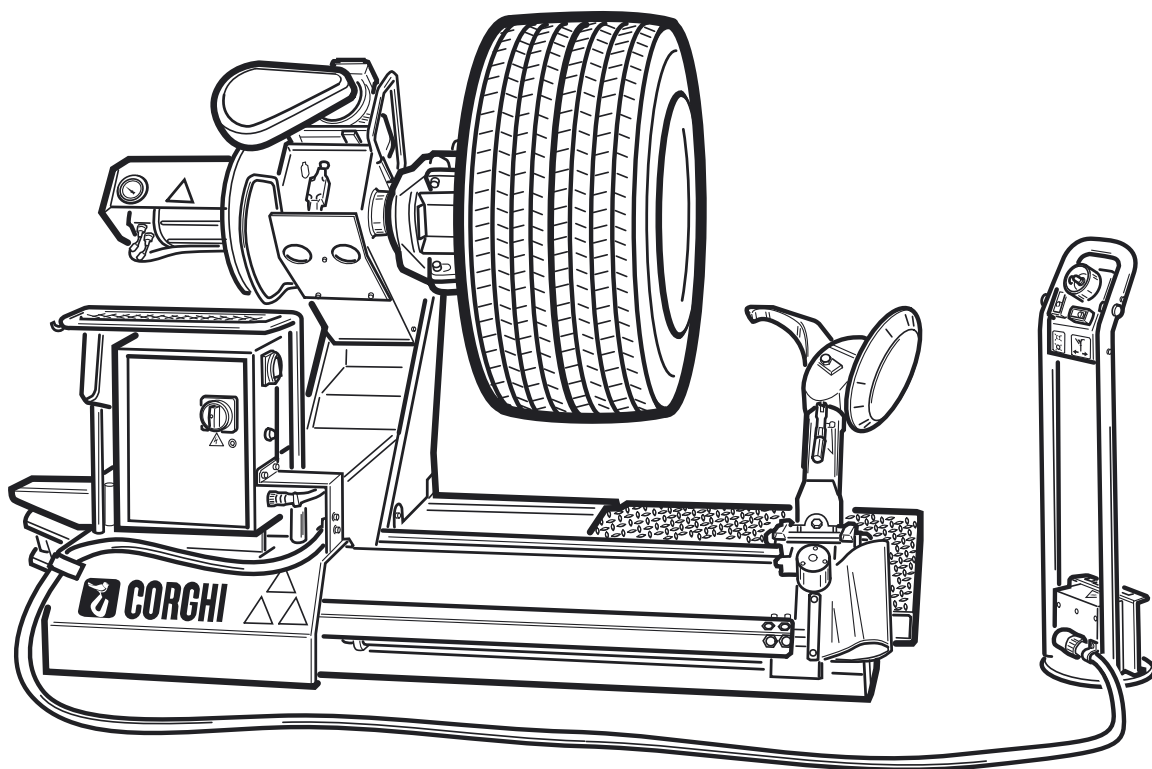


Questo libretto non autorizza l'utente ad intervenire sulle macchine ad esclusione di quanto esplicitamente descritto nel Manuale d'uso, ma consente all'utente di fornire informazioni precise all'Assistenza tecnica, al fine di ridurre i tempi di intervento.

# AG S 52L (2005)

The "Spare parts" booklet does not authorize the user to carry out work on the machine unless expressly specified in the instruction manual, but does enable him to provide accurate information to the assistance service in order to reduce downtime.

## PEZZI DI RICAMBIO SPARE PARTS LIST ERSATZTEILLISTE PIECES DE RECHANGE



Versione

1.0

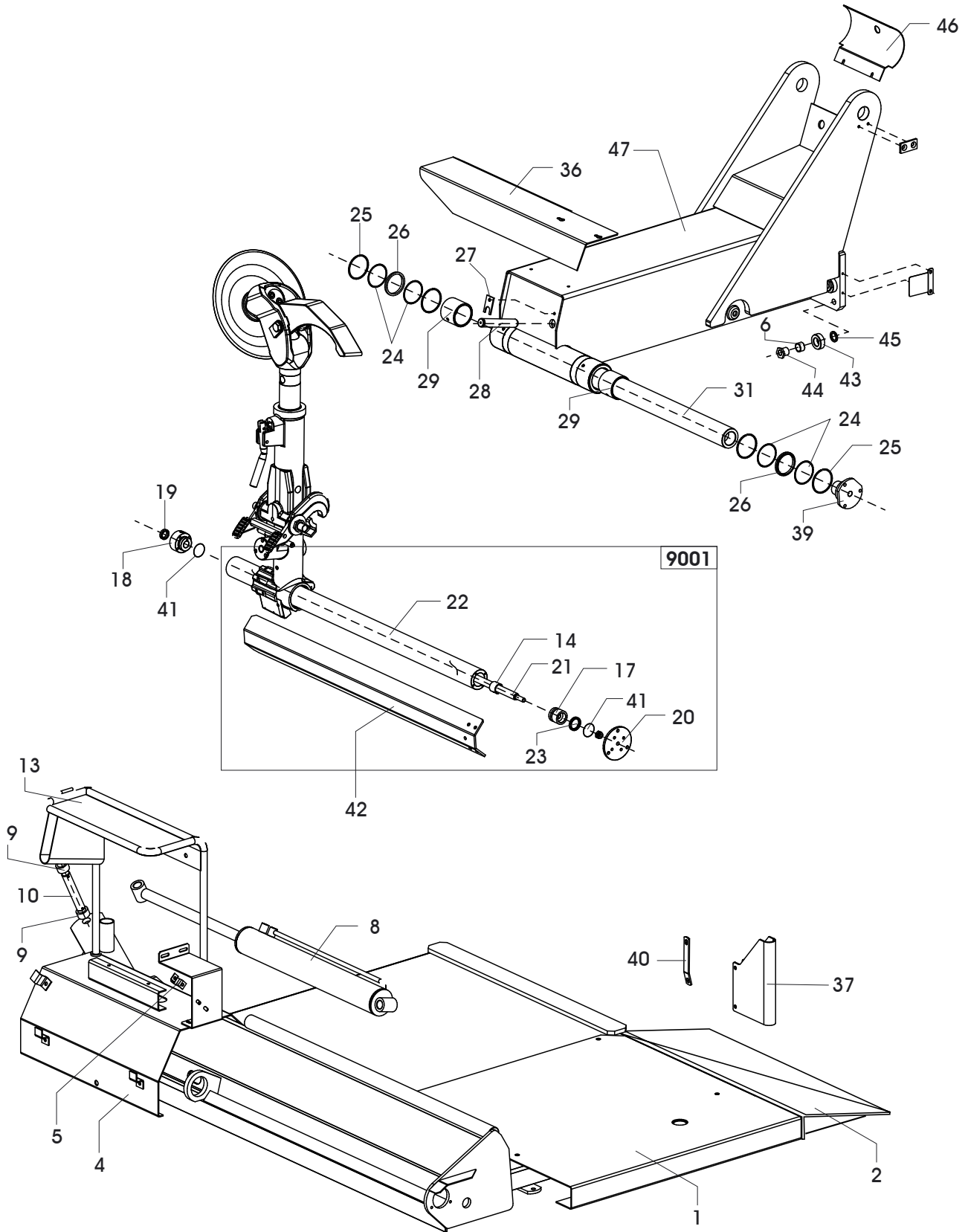
In produzione da  
Production from  
Herstellung ab  
Production

02 / 05

Der Katalog Ersatzteile stellt keine Genehmigung zu eigenmächtigen Eingriffen dar (mit Ausnahme jener im Handbuch beschriebenen), sondern soll den Anwender in die Lage versetzen, dem technischen Service präzise Informationen zu liefern, um die Reparaturzeiten zu verkürzen.

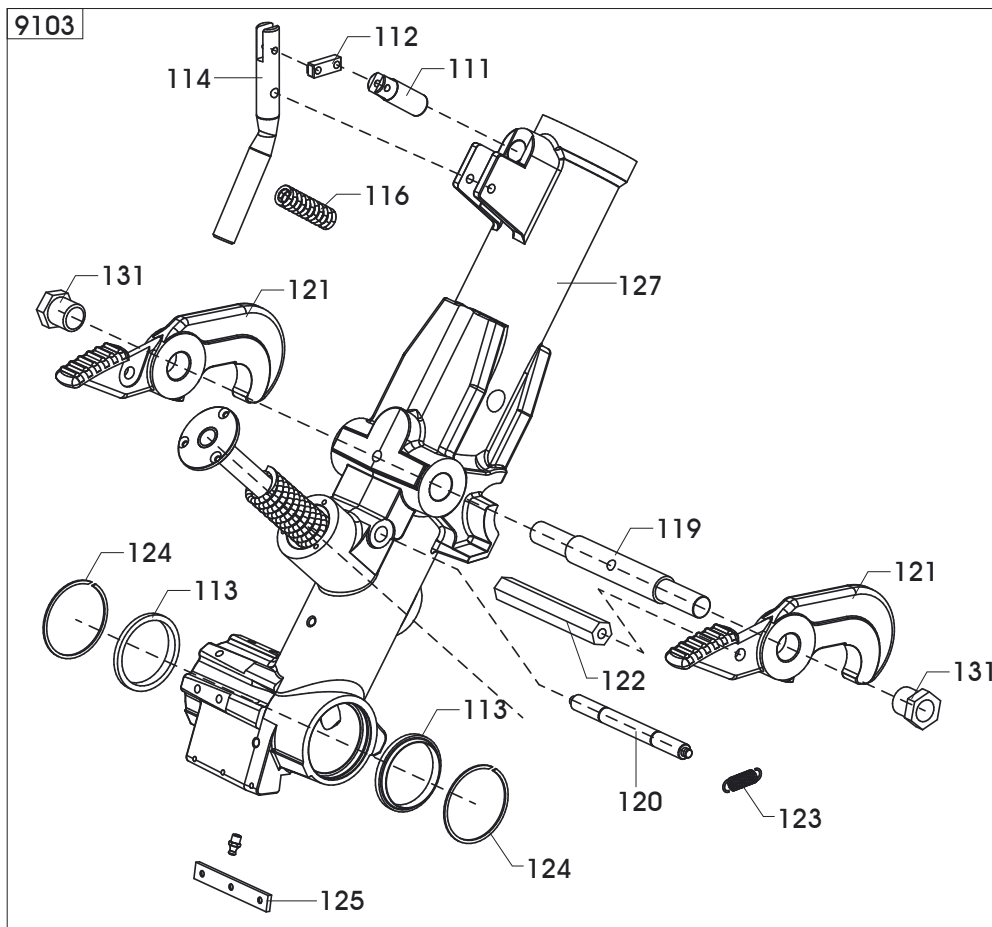
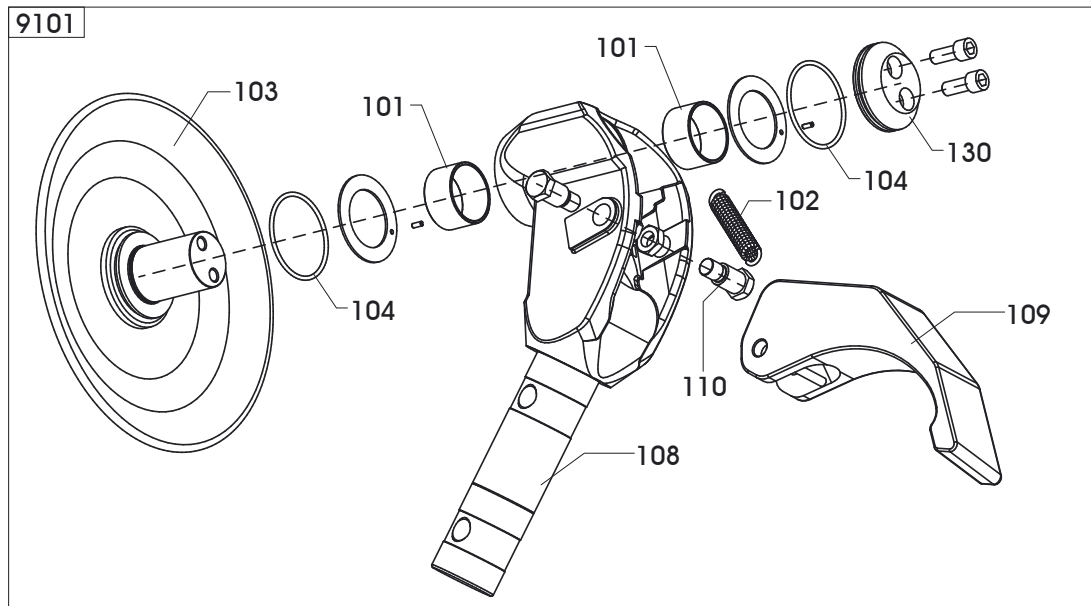


Le livret "Pièces de rechange", n'autorise pas l'utilisateur à intervenir sur les machines, sauf pour tout ce qui est clairement décrit dans le manuel d'utilisation, mais lui permet de fournir des informations précises à l'assistance technique, afin de diminuer les délais d'intervention.



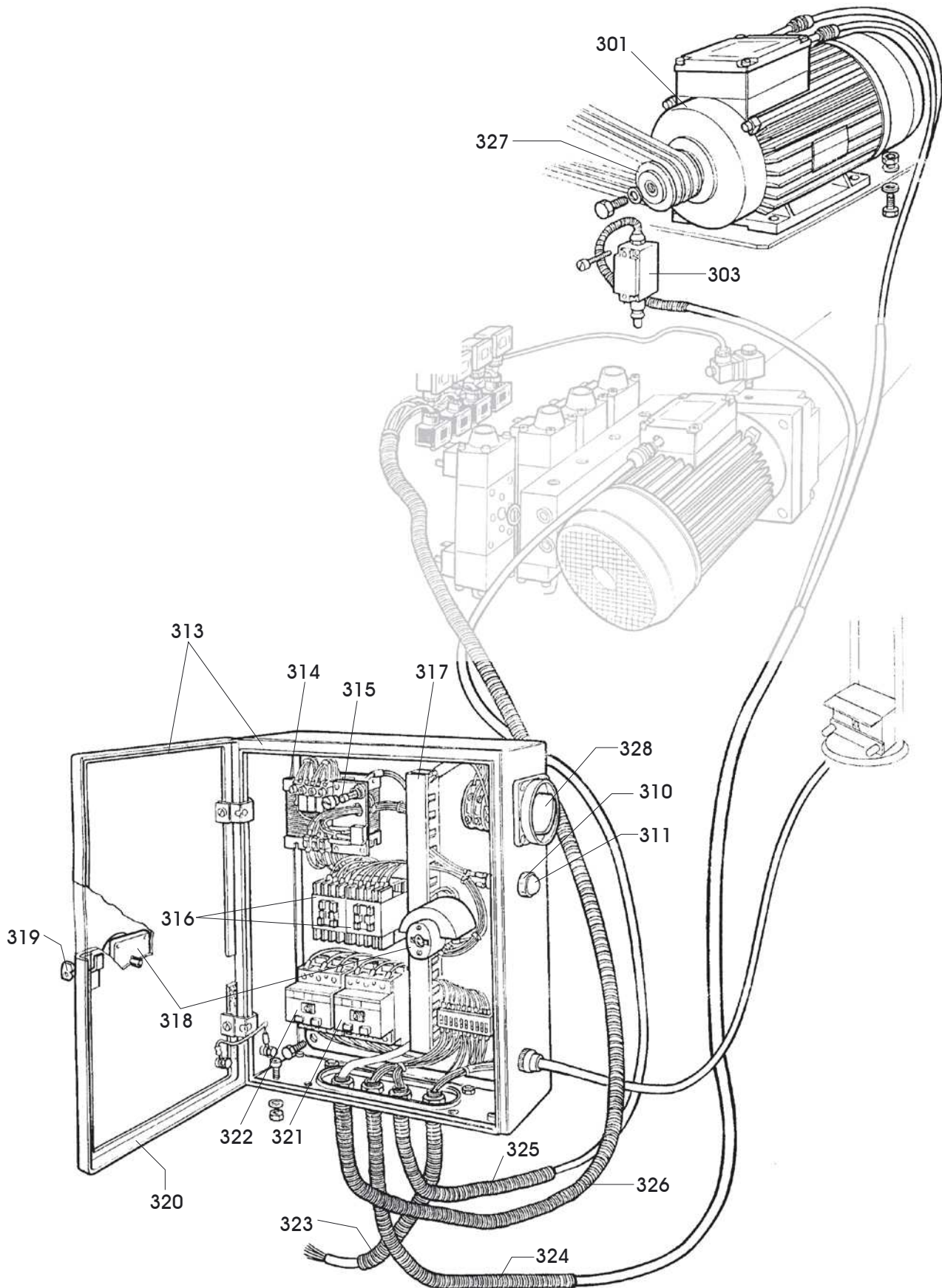
|      |             |             |               |                 |                     |
|------|-------------|-------------|---------------|-----------------|---------------------|
| 0001 | 900237497   | PEDANA      | PLATFORM      | PLATTFORM       | PLATE-FORME         |
| 0002 | 900237494   | RAMPA       | RAMP          | RAMPE           | RAMPE               |
| 0004 | 900235458   | LAMIERA     | METAL SHEET   | BLECH           | TOLE                |
| 0005 | 900338372   | FASCETTA    | STRAP         | SCHLAUCHSCHELLE | COLLIER             |
| 0006 | 900438756   | BOCCOLA     | BUSHING       | LAGER           | DOUILLE             |
| 0007 | 900334422   | PERNO       | PIN           | ZAPFEN          | PIVOT               |
| 0008 | 900234451   | CILINDRO    | CYLINDER      | ZYLINDER        | CYLINDRE            |
| 0009 | 900317421   | TUBO        | PIPE          | ROHR            | TUYAU               |
| 0010 | 900317425   | SPINOTTO    | GUDGEON       | KOLBENBOLZEN    | GOUJON              |
| 0013 | 900334842   | RETTANGOLO  | RECTANGLE     | RECHTECK        | RECTANGLE           |
| 0018 | 900348587   | FLANGIA     | FLANGE        | FLANSCH         | FLASQUE             |
| 0019 | 900422702   | GUARNIZIONE | SEAL          | DICHTUNG        | JOINT               |
| 0024 | 900319510   | RONDELLA    | WASHER        | UNTERLEGSCHIEBE | RONDELLE            |
| 0025 | 900417822   | ANELLO      | RING          | RING            | ANNEAU              |
| 0026 | 900417823   | ANELLO      | RING          | RING            | ANNEAU              |
| 0027 | 900321834   | FERMO       | RETAINER      | ANSCHLAG        | ARRET               |
| 0029 | 900434310   | BRONZINA    | BRASS         | LAGERBUCHSE     | COUSSINET EN BRONZE |
| 0031 | 900322973   | PERNO       | PIN           | ZAPFEN          | PIVOT               |
| 0036 | 900346350   | PROTEZIONE  | SHIELD        | ABDECKUNG       | PROTECTION          |
| 0039 | 900322972   | FLANGIA     | FLANGE        | FLANSCH         | FLASQUE             |
| 0040 | 900346347   | PROTEZIONE  | SHIELD        | ABDECKUNG       | PROTECTION          |
| 0041 | 900430291   | GUARNIZIONE | SEAL          | DICHTUNG        | JOINT               |
| 0042 | 900261073   | PROFILATO   | METAL SECTION | FORMEISEN       | PROFILE             |
| 0043 | 900338753   | ROTELLA     | WHEEL         | RAEDCHEN        | ROULETTE            |
| 0044 | 900338752   | PERNO       | PIN           | ZAPFEN          | PIVOT               |
| 0045 | 900338755   | RONDELLA    | WASHER        | UNTERLEGSCHIEBE | RONDELLE            |
| 0046 | 900342409   | PROTEZIONE  | SHIELD        | ABDECKUNG       | PROTECTION          |
| 0047 | 9005-100768 | CARRELLO    | TROLLEY       | WAGEN           | CHARIOT             |

|             |                  |                 |                 |                 |                 |
|-------------|------------------|-----------------|-----------------|-----------------|-----------------|
| <b>9001</b> | <b>900248588</b> | <b>CILINDRO</b> | <b>CYLINDER</b> | <b>ZYLINDER</b> | <b>CYLINDRE</b> |
| 0014        | 900321787        | DISTANZIALE     | SPACER          | ABSTANDSSTUECK  | ENTRETOISE      |
| 0017        | 900321786        | STANTUFFO       | PISTON          | KOLBEN          | PISTON          |
| 0020        | 900348586        | FLANGIA         | FLANGE          | FLANSCH         | FLASQUE         |
| 0022        | 900348585        | TUBO            | PIPE            | ROHR            | TUYAU           |
| 0021        | 900336116        | PERNO           | PIN             | ZAPFEN          | PIVOT           |
| 0023        | 900421832        | GUARNIZIONE     | SEAL            | DICHTUNG        | JOINT           |
| 0041        | 900430291        | GUARNIZIONE     | SEAL            | DICHTUNG        | JOINT           |

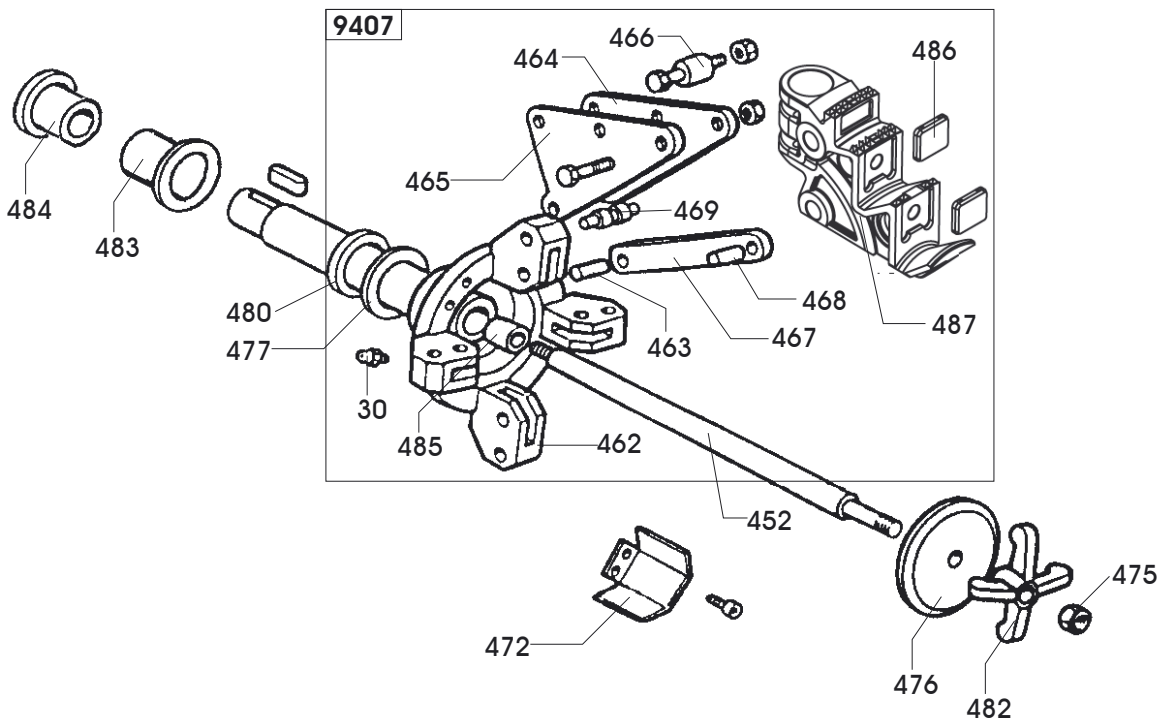
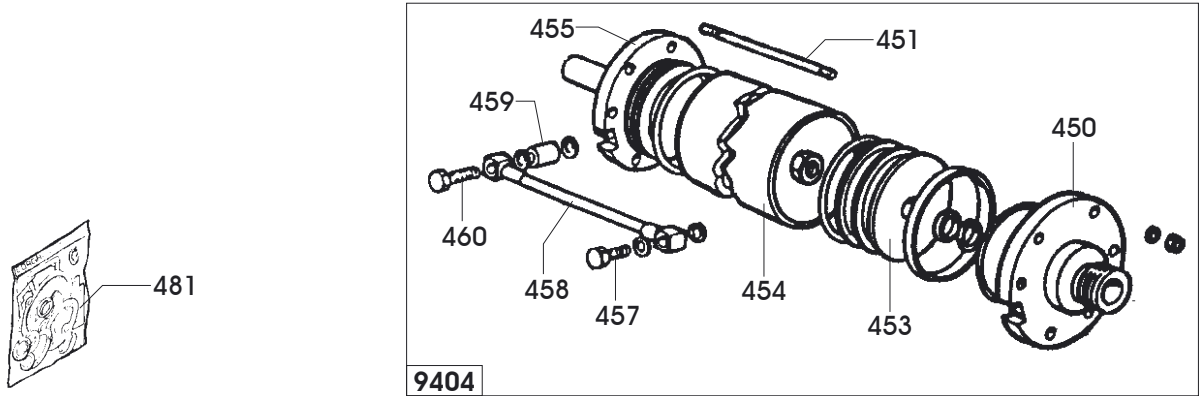
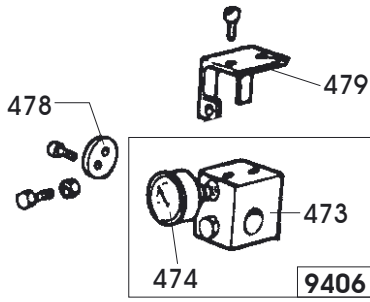


| 9101 | 9005-300321 | UTENSILE    | TOOL    | WERKZEUG        | OUTIL     |
|------|-------------|-------------|---------|-----------------|-----------|
| 0101 | 9003-01421  | BOCCOLA     | BUSHING | LAGER           | DOUILLE   |
| 0102 | 900421596   | MOLLA       | SPRING  | FEDER           | RESSORT   |
| 0103 | 9004-326400 | DISCO       | DISK    | SCHEIBE         | DISQUE    |
| 0104 | 90085600174 | GUARNIZIONE | SEAL    | DICHTUNG        | JOINT     |
| 0108 | 9004-327173 | SUPPORTO    | SUPPORT | LAGER           | SUPPORT   |
| 0109 | 900237503   | UTENSILE    | TOOL    | WERKZEUG        | OUTIL     |
| 0110 | 900336480   | FULCRO      | FULCRUM | DREHPUNKT       | ENTABLURE |
| 0130 | 9004-327271 | RONDELLA    | WASHER  | UNTERLEGSCHIEBE | RONDELLE  |

| 9103 | 900249600 | ASTUCCIO         | BOX           | ETUI         | ETUI             |
|------|-----------|------------------|---------------|--------------|------------------|
| 0111 | 900336467 | LEVA             | LEVER         | HEBEL        | LEVIER           |
| 0112 | 900336469 | BIELLA           | TRACE         | PLEUELSTANGE | BIELLE           |
| 0113 | 900447828 | GUARNIZIONE      | SEAL          | DICHTUNG     | JOINT            |
| 0114 | 900336468 | MANIGLIA         | HANDLE        | HANDGRIFF    | POIGNEE          |
| 0115 | 900321798 | CRICCHETTO       | CRICK         | SPERRKLINKE  | CLIQUET          |
| 0116 | 900436490 | MOLLA            | SPRING        | FEDER        | RESSORT          |
| 0118 | 900236462 | FODERO PER MOLLA | SPRING SHEATH | FEDER HUELSE | FOURREAU RESSORT |
| 0119 | 900338295 | PERNO            | PIN           | ZAPFEN       | PIVOT            |
| 0120 | 900338293 | GANCIO           | HOOK          | HAKEN        | CROCHET          |
| 0121 | 900337037 | CRICCHETTO       | CRICK         | SPERRKLINKE  | CLIQUET          |
| 0122 | 900338294 | PERNO            | PIN           | ZAPFEN       | PIVOT            |
| 0123 | 900421828 | MOLLA            | SPRING        | FEDER        | RESSORT          |
| 0124 | 900236470 | TUBO             | PIPE          | ROHR         | TUYAU            |
| 0125 | 900344893 | SLITTA           | SLIDE         | SCHLITTEN    | CHARIOT          |
| 0126 | 900437519 | MOLLA            | SPRING        | FEDER        | RESSORT          |
| 0127 | 900247831 | ASTUCCIO         | BOX           | ETUI         | ETUI             |
| 0131 | 900321790 | BOCCOLA          | BUSHING       | LAGER        | DOUILLE          |



|                | <b>MOTORE 2V</b>              | <b>MOTOR</b>     | <b>MOTOR</b>      | <b>MOTEUR</b>       |
|----------------|-------------------------------|------------------|-------------------|---------------------|
| 0301 900424020 | 220V 3ph 60Hz                 | 220V 3ph 60Hz    | 220V 3ph 60Hz     | 220V 3ph 60Hz       |
| 0301 900436251 | 380V 3ph 60Hz                 | 380V 3ph 60Hz    | 380V 3ph 60Hz     | 380V 3ph 60Hz       |
| 0303 900422041 | INTERRUTTORE                  | SWITCH           | SCHALTER          | INTERRUPTEUR        |
| 0310 900422040 | SPIA                          | PILOT LAMP       | KONTROLLEUCHTE    | TEMOIN              |
| 0311 950415012 | LAMPADA                       | LAMP             | LAMPE             | LAMPE               |
| 0313 900449792 | CASSA                         | CASE             | KASTEN            | CAISSE              |
| 0314 900446502 | TRASFORMATORE                 | TRANSFORMER      | TRANSFORMATOR     | TRANSFORMATEUR      |
| 0315 900429692 | FUSIBILE                      | FUSE             | SICHERUNG         | FUSIBLE             |
| 0316 900424701 | TELERUTTORE                   | REMOTE SWITCH    | FERNASCHALTER     | TELERUPTEUR         |
| 0317 900457540 | RILEVATORE                    | SIGNAL TRACER    | AUFNEHMER         | MESUREUR            |
| 0318 900435368 | INTERRUTTORE                  | SWITCH           | SCHALTER          | INTERRUPTEUR        |
| 0319 900427755 | CHIAVE                        | WRENCH           | SCHLUESSEL        | CLEF                |
| 0320 900436641 | GUARNIZIONE                   | SEAL             | DICHTUNG          | JOINT               |
| 0321 900491975 | SALVAMOTORE 4÷6,3A            | OVERLOAD 4÷6,3A  | UEBERKAST 4÷6,3A  | DISJONCTEUR 4÷6,3A  |
| 0322 900491895 | SALVAMOTORE 6,3÷10A           | OVERLOAD 6,3÷10A | UEBERKAST 6,3÷10A | DISJONCTEUR 6,3÷10A |
| 0323 900236602 | CAVO                          | CABLE            | KABEL             | CABLE               |
| 0324 900236600 | CAVO                          | CABLE            | KABEL             | CABLE               |
| 0325 900236599 | CAVO                          | CABLE            | KABEL             | CABLE               |
| 0326 900236601 | CAVO                          | CABLE            | KABEL             | CABLE               |
| 0327 900355892 | PULEGGIA                      | PULLEY           | RIEMENSCHLEIBE    | POULIE              |
| 0328 900444326 | SCHEDA ELETTRONICA P.C. BOARD |                  | ELEKTR. PLATINE   | FICHE ELECTR.       |

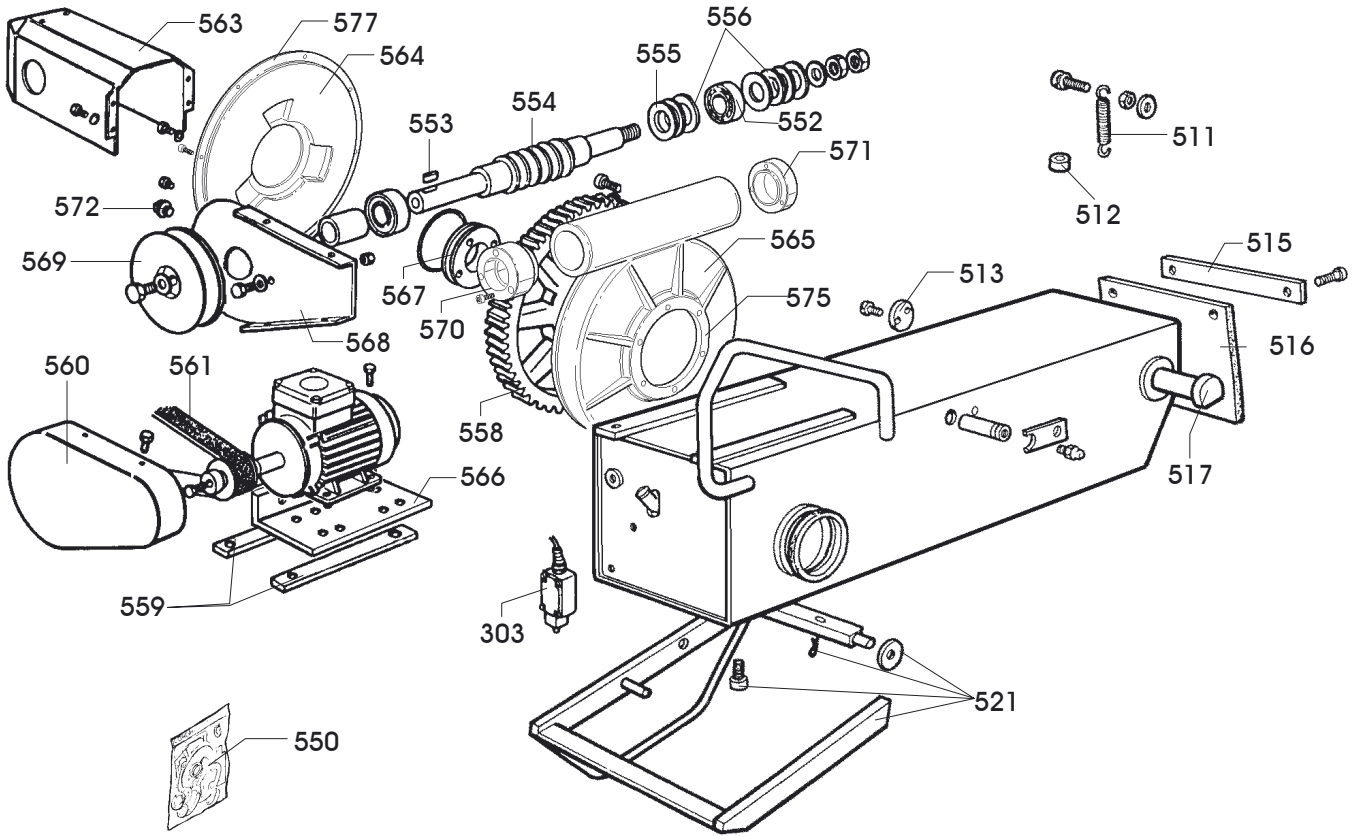


| 9404 | 900239119 | CILINDRO  | CYLINDER       | ZYLINDER      | CYLINDRE |
|------|-----------|-----------|----------------|---------------|----------|
| 0450 | 900239118 | FLANGIA   | FLANGE         | FLANSCH       | FLASQUE  |
| 0451 | 900334204 | TIRANTE   | STAY ROD       | ZUGSTANGE     | TIRANT   |
| 0452 | 900338599 | STELO     | STEM           | SCHAFT        | TIGE     |
| 0453 | 900338604 | STANTUFFO | PISTON         | KOLBEN        | PISTON   |
| 0454 | 900338710 | CILINDRO  | CYLINDER       | ZYLINDER      | CYLINDRE |
| 0455 | 900338777 | FLANGIA   | FLANGE         | FLANSCH       | FLASQUE  |
| 0456 | 900440357 | TAPPO     | PLUG           | STOPFEN       | BOUCHON  |
| 0457 | 900322489 | PERNO     | PIN            | ZAPFEN        | PIVOT    |
| 0458 | 900434426 | TUBO      | PIPE           | ROHR          | TUYAU    |
| 0459 | 900335283 | PROLUNGA  | EXTENSION CORD | VERLAENGERUNG | RALLONGE |
| 0460 | 900335284 | VITE      | SCREW          | SCHRAUBE      | VIS      |

| 9406 | 900239596 | DISTRIBUTORE | DISTRIBUTOR    | VERTEILER   | DISTRIBUTEUR |
|------|-----------|--------------|----------------|-------------|--------------|
| 0473 | 900440387 | DISTRIBUTORE | DISTRIBUTOR    | VERTEILER   | DISTRIBUTEUR |
| 0474 | 900441979 | MANOMETRO    | PRESSURE GAUGE | DRUCKMESSER | MANOMETRE    |

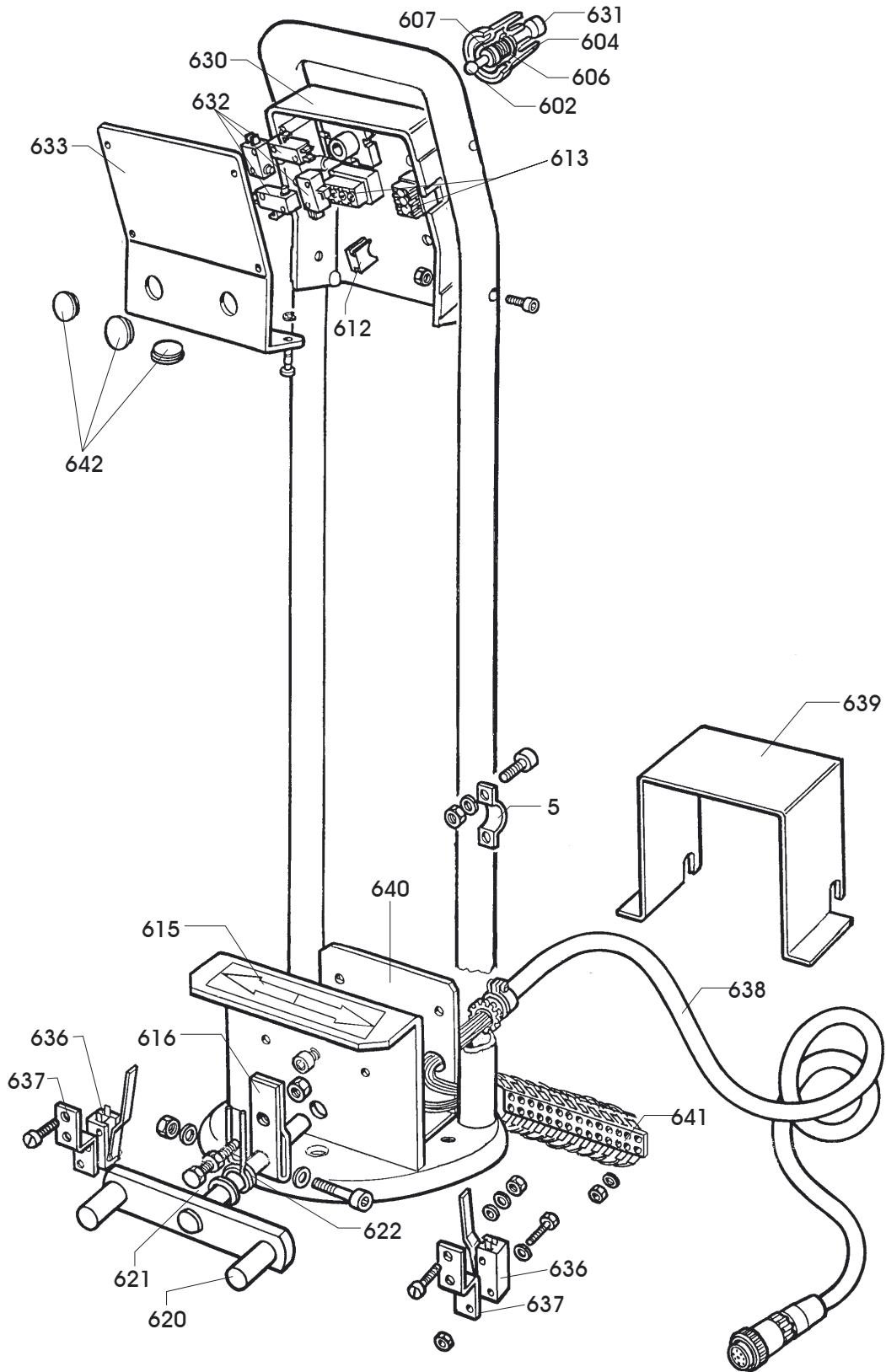
| 9407 | 9005-300330 | AUTOCENTRANTE | TURNTABLE  | SPANNFUTTER    | PLATEAU AUTOCENT: |
|------|-------------|---------------|------------|----------------|-------------------|
| 0030 | 900429406   | INGRASSATORE  | LUBRICATOR | SCHMIERNIPPEL  | GRAISSEUR         |
| 0462 | 900354329   | MANDRINO      | SPINDLE    | SPINDEL        | MANDRIN           |
| 0463 | 900321564   | SPINOTTO      | GUDGEON    | KOLBENBOLZEN   | GOUJON            |
| 0464 | 900334156   | PIASTRA       | SLAB       | PLATTE         | PLAQUE            |
| 0465 | 900334157   | PIASTRA       | SLAB       | PLATTE         | PLAQUE            |
| 0466 | 900334160   | DISTANZIALE   | SPACER     | ABSTANDSSTUECK | ENTRETOISE        |
| 0467 | 900334163   | BIELLA        | TRACE      | PLEUELSTANGE   | BIELLE            |
| 0468 | 900334164   | SPINOTTO      | GUDGEON    | KOLBENBOLZEN   | GOUJON            |
| 0469 | 900334170   | RULLO         | ROLLER     | WALZE          | ROULEAU           |
| 0486 | 900435441   | TASSELLO      | BLOCK      | EINSATZSTUECK  | TAMPON            |
| 0487 | 9004-326301 | GRIFFA        | JAW        | BACKE          | MORS              |

|      |             |                 |           |                 |                     |
|------|-------------|-----------------|-----------|-----------------|---------------------|
| 0472 | 900341289   | CARTER          | CASING    | GEHAUSE         | CARTER              |
| 0475 | 900338600   | CROCE           | CROSS     | KREUZ           | CROIX               |
| 0476 | 900338601   | DISCO           | DISK      | SCHEIBE         | DISQUE              |
| 0477 | 900355174   | ANELLO          | RING      | RING            | ANNEAU              |
| 0478 | 900338778   | RONDELLA        | WASHER    | UNTERLEGSCHEIBE | RONDELLE            |
| 0479 | 900339538   | FERMO           | RETAINER  | ANSCHLAG        | ARRET               |
| 0480 | 900354976   | RONDELLA        | WASHER    | UNTERLEGSCHEIBE | RONDELLE            |
| 0481 | 900242012   | KIT GUARNIZIONI | SEALS KIT | DICHTUNGSATZ    | KIT JOINTS          |
| 0482 | 900691674   | DADO            | NUT       | MUTTER          | ECROU               |
| 0483 | 900355175   | BRONZINA        | BRASS     | LAGERBUCHSE     | COUSSINET EN BRONZE |
| 0484 | 900453344   | BRONZINA        | BRASS     | LAGERBUCHSE     | COUSSINET EN BRONZE |
| 0485 | 900438592   | BRONZINA        | BRASS     | LAGERBUCHSE     | COUSSINET EN BRONZE |
| 0486 | 900435441   | TASSELLO        | BLOCK     | EINSATZSTUECK   | TAMPON              |
| 0487 | 9004-326301 | GRIFFA          | JAW       | BACKE           | MORS                |

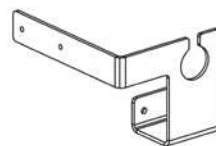
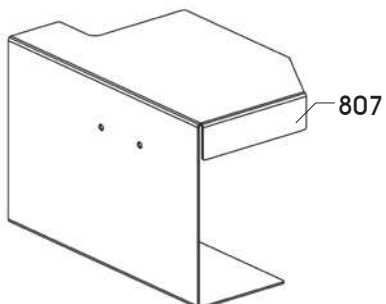
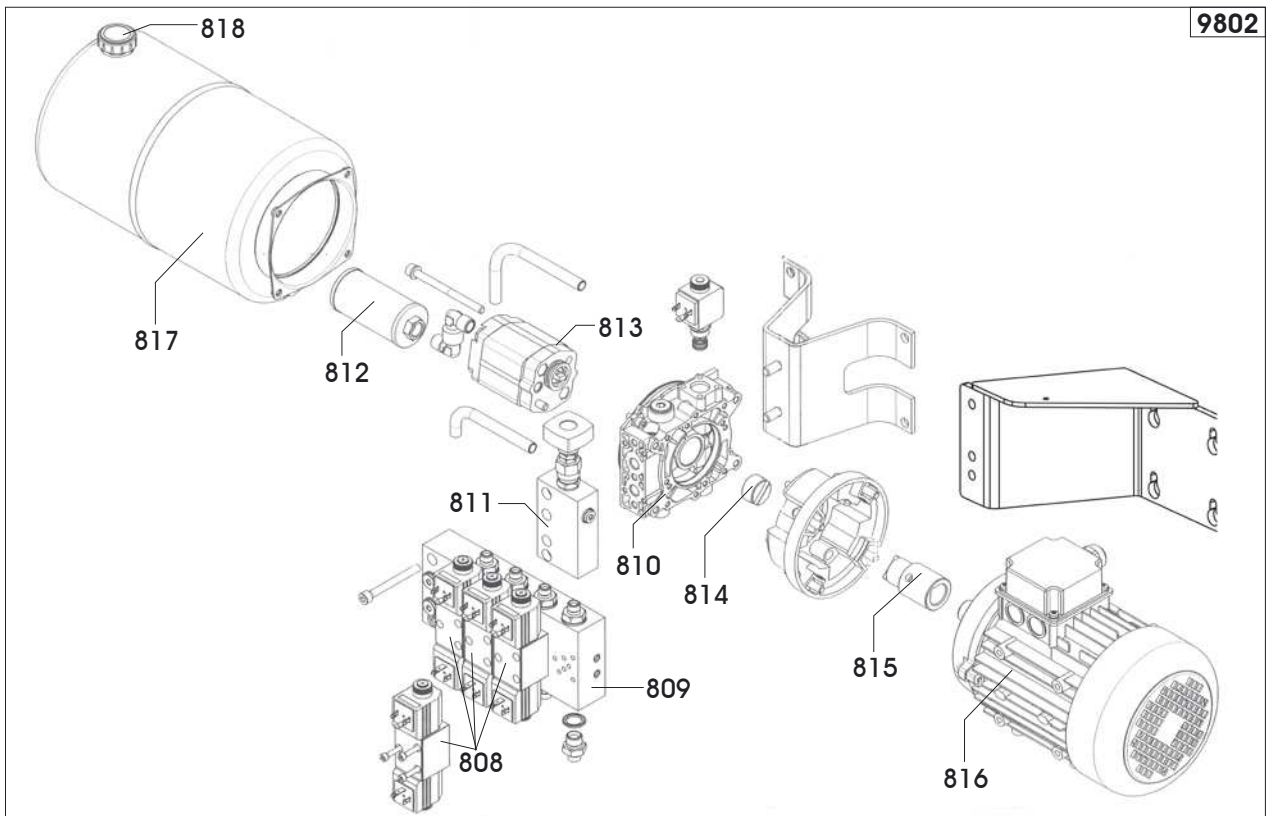
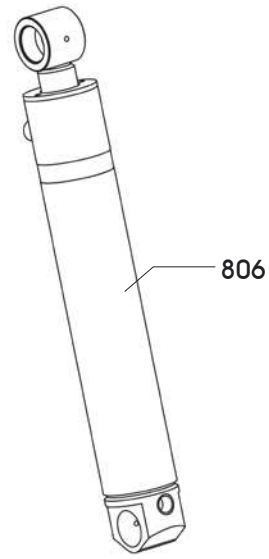
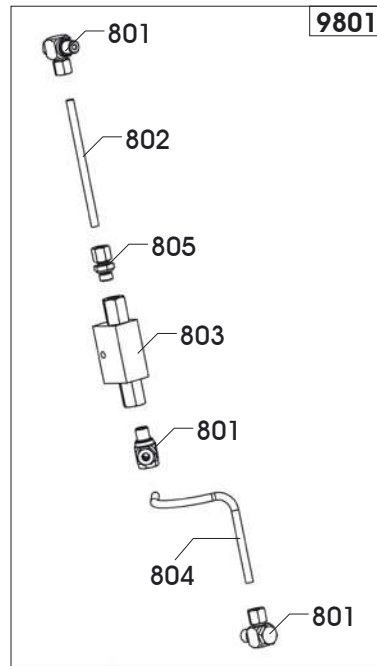


|      |           |                 |              |                 |            |
|------|-----------|-----------------|--------------|-----------------|------------|
| 0511 | 900417834 | MOLLA           | SPRING       | FEDER           | RESSORT    |
| 0512 | 900305022 | DISTANZIALE     | SPACER       | ABSTANDSSTUECK  | ENTRETOISE |
| 0513 | 900341681 | RONDELLA        | WASHER       | UNTERLEGSCHEIBE | RONDELLE   |
| 0515 | 900346349 | SUPPORTO        | SUPPORT      | LAGER           | SUPPORT    |
| 0516 | 900346348 | PROTEZIONE      | SHIELD       | ABDECKUNG       | PROTECTION |
| 0517 | 900346390 | PERNO           | PIN          | ZAPFEN          | PIVOT      |
| 0521 | 900220127 | PEDALE          | PEDAL        | PEDAL           | PEDALE     |
| 0550 | 900242013 | KIT GUARNIZIONI | SEALS KIT    | DICHTUNGSATZ    | KIT JOINTS |
| 0551 | 900354881 | BOCCOLA         | BUSHING      | LAGER           | DOUILLE    |
| 0552 | 900601034 | CUSCINETTO      | BEARING      | LAGER           | ROULEMENT  |
| 0553 | 900600716 | LINGUETTA       | TANG         | FEDERKEIL       | LANGUETTE  |
| 0554 | 900317275 | VITE            | SCREW        | SCHRAUBE        | VIS        |
| 0555 | 900317281 | RONDELLA        | WASHER       | UNTERLEGSCHEIBE | RONDELLE   |
| 0556 | 900601035 | CUSCINETTO      | BEARING      | LAGER           | ROULEMENT  |
| 0558 | 900341541 | RUOTA           | WHEEL        | RAD             | ROUE       |
| 0559 | 900340985 | SUPPORTO        | SUPPORT      | LAGER           | SUPPORT    |
| 0560 | 900455891 | CARTER          | CASING       | GEHAUSE         | CARTER     |
| 0561 | 900455894 | CINGHIA         | BELT         | RIEMEN          | COURROIE   |
| 0561 | 900455897 | CINGHIA         | BELT         | RIEMEN          | COURROIE   |
| 0563 | 900253346 | CARTER          | CASING       | GEHAUSE         | CARTER     |
| 0564 | 900354213 | COPERCHIO       | LID          | DECKEL          | COUVERCLE  |
| 0565 | 900354212 | SCATOLA         | BOX          | SCHACHTEL       | BOITE      |
| 0566 | 900355937 | FLANGIA         | FLANGE       | FLANSCH         | FLASQUE    |
| 0567 | 900353343 | FLANGIA         | FLANGE       | FLANSCH         | FLASQUE    |
| 0568 | 900353245 | CARTER          | CASING       | GEHAUSE         | CARTER     |
| 0569 | 900355893 | PULEGGIA        | PULLEY       | RIEMENSCHLEIBE  | POULIE     |
| 0570 | 900354876 | FLANGIA         | FLANGE       | FLANSCH         | FLASQUE    |
| 0571 | 900354875 | FLANGIA         | FLANGE       | FLANSCH         | FLASQUE    |
| 0572 | 900447643 | INDICATORE      | STATUS LIGHT | ANZEIGER        | INDICATEUR |
| 0574 | 900602213 | CUSCINETTO      | BEARING      | LAGER           | ROULEMENT  |
| 0575 | 900358951 | GUARNIZIONE     | SEAL         | DICHTUNG        | JOINT      |
| 0576 | 900259119 | BRACCIO         | ARM          | ARM             | BRAS       |
| 0577 | 900454882 | ANELLO          | RING         | RING            | ANNEAU     |

9602



| 9602 | 9005-100769 | MANIPOLATORE       | MANIPULATOR | MANIPULATOR     | MANIPULATEUR      |
|------|-------------|--------------------|-------------|-----------------|-------------------|
| 0602 | 900339000   | LEVA               | LEVER       | HEBEL           | LEVIER            |
| 0606 | 900439697   | MOLLA              | SPRING      | FEDER           | RESSORT           |
| 0607 | 900339002   | GUIDA              | GUIDE       | FUEHRUNG        | GLISSIERE         |
| 0612 | 900441518   | PROTEZIONE         | SHIELD      | ABDECKUNG       | PROTECTION        |
| 0613 | 900439569   | INTERRUTTORE       | SWITCH      | SCHALTER        | INTERRUPTEUR      |
| 0615 | 900421502   | TARGHETTA          | DATA PLATE  | TYPENSCHILD     | PLAQUETTE         |
| 0616 | 900317491   | LEVA               | LEVER       | HEBEL           | LEVIER            |
| 0620 | 900217479   | PEDALE             | PEDAL       | PEDAL           | PEDALE            |
| 0621 | 900325050   | DISTANZIALE        | SPACER      | ABSTANDSSTUECK  | ENTRETOISE        |
| 0622 | 900401270   | MOLLA              | SPRING      | FEDER           | RESSORT           |
| 0630 | 900255791   | SUPPORTO           | SUPPORT     | LAGER           | SUPPORT           |
| 0631 | 900355781   | POMOLO             | KNOB        | BALLENGRIFF     | POMMEAU           |
| 0632 | 900454405   | MICROINTERRUTTORE  | MICROSWITCH | MIKROSCHALTER   | MICROINTERRUPTEUR |
| 0633 | 900355779   | COPERCHIO          | LID         | DECKEL          | COUVERCLE         |
| 0636 | 900440874   | MICROINTERRUTTORE  | MICROSWITCH | MIKROSCHALTER   | MICROINTERRUPTEUR |
| 0637 | 900355786   | STAFFA             | BRACKET     | KLAUE           | ETRIER            |
| 0638 | 900255627   | CAVO               | CABLE       | KABEL           | CABLE             |
| 0639 | 900355788   | CARTER             | CASING      | GEHAUSE         | CARTER            |
| 0640 | 900355799   | SUPPORTO           | SUPPORT     | LAGER           | SUPPORT           |
| 0641 | 900455626   | SCHEDA ELETTRONICA | P.C. BOARD  | ELEKTR. PLATINE | FICHE ELECTR.     |
| 0642 | 900458119   | TAPPO              | PLUG        | STOPFEN         | BOUCHON           |

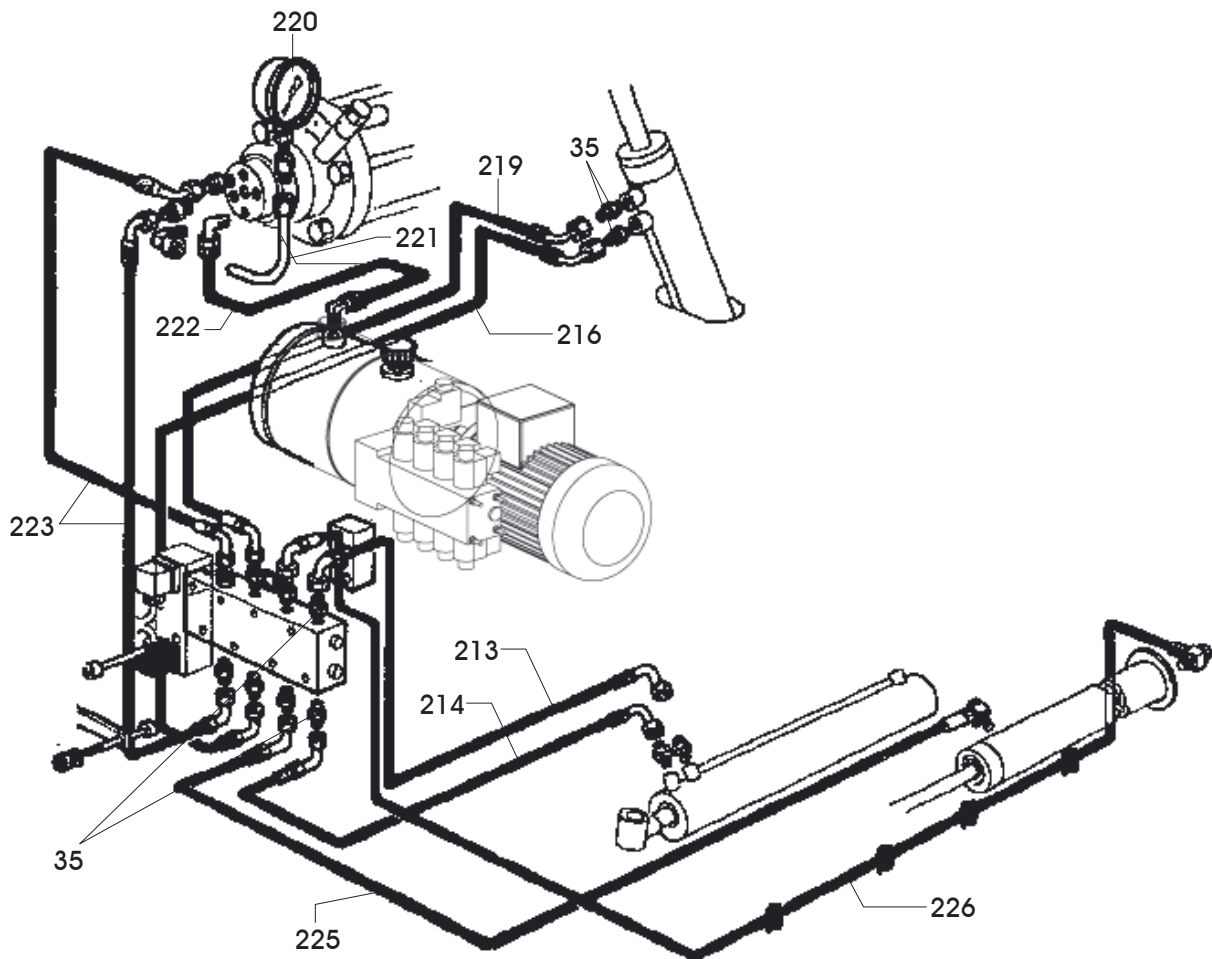


| <b>9801</b> | <b>9005-100770</b> | <b>VALVOLA</b> | <b>VALVE</b> | <b>VENTIL</b> | <b>VANNE</b> |
|-------------|--------------------|----------------|--------------|---------------|--------------|
| 0801        | 90086200066        | RACCORDO       | CONNECTOR    | ANSCHLUSS     | RACCORD      |
| 0802        | 9004-326971        | TUBO           | PIPE         | ROHR          | TUYAU        |
| 0803        | 900454414          | VALVOLA        | VALVE        | VENTIL        | VANNE        |
| 0804        | 9004-326972        | TUBO           | PIPE         | ROHR          | TUYAU        |
| 0805        | 900455369          | RACCORDO       | CONNECTOR    | ANSCHLUSS     | RACCORD      |

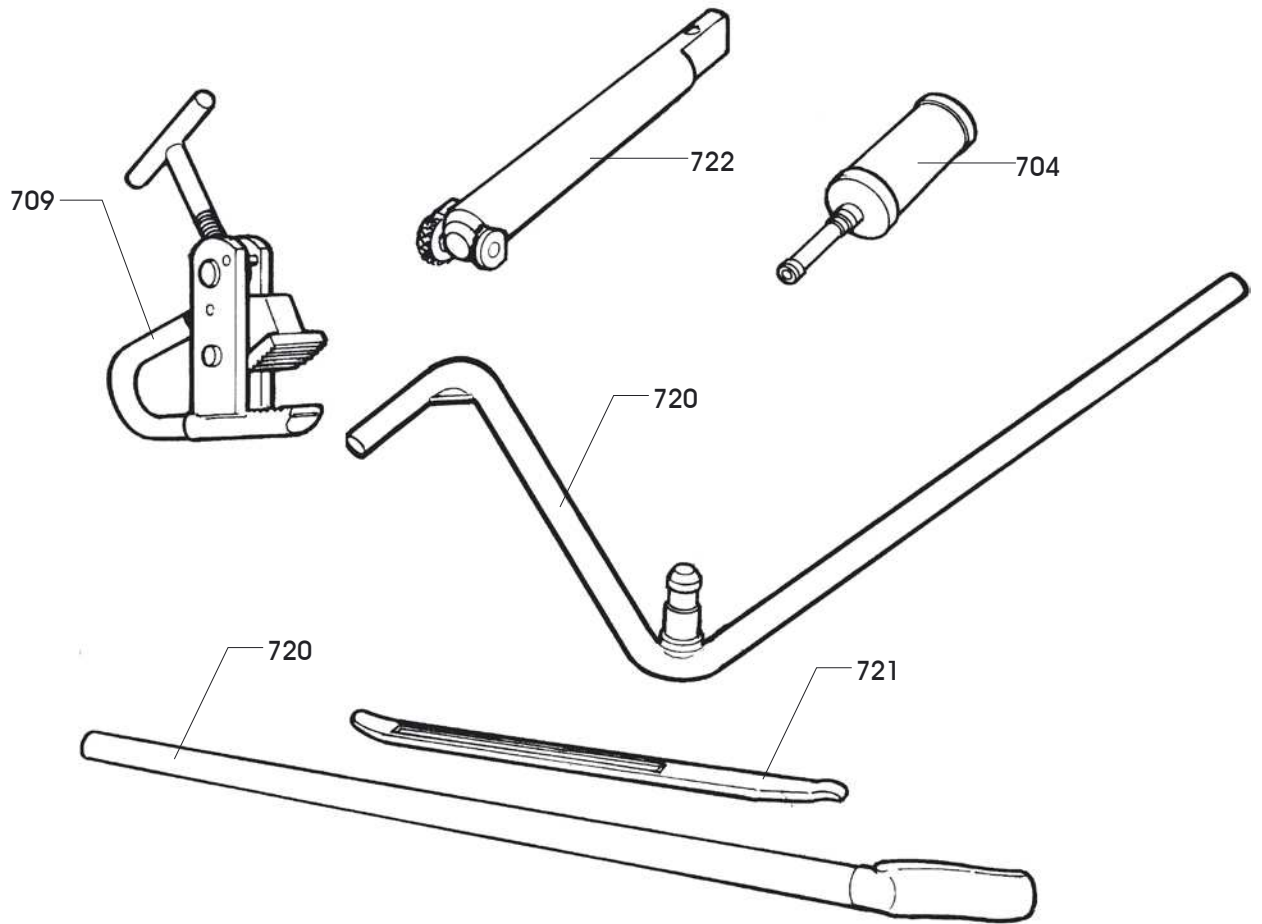
|      |             |          |          |          |          |
|------|-------------|----------|----------|----------|----------|
| 0806 | 9004-326641 | CILINDRO | CYLINDER | ZYLINDER | CYLINDRE |
| 0807 | 9004-327619 | CARTER   | CASING   | GEHAUSE  | CARTER   |

**230/400V 60HZ**

| <b>9802</b> | <b>900234259</b> | <b>CENTRALINA</b> | <b>POWER PACK</b> | <b>STEUERGERAET</b> | <b>UNITE DE CONTROLE</b> |
|-------------|------------------|-------------------|-------------------|---------------------|--------------------------|
| 0808        | 900458106        | ELETTRIVALVOLA    | SOLENOID VALVE    | MAGNETVENTIL        | SOUPAPE ELECTRIQUE       |
| 0809        | 900463848        | BLOCCHETTO        | BLOCK             | BLOCK               | BLOC                     |
| 0810        | 900463930        | FLANGIA           | FLANGE            | FLANSCH             | FLASQUE                  |
| 0811        | 900463847        | BLOCCHETTO        | BLOCK             | BLOCK               | BLOC                     |
| 0812        | 900451493        | FILTRO            | FILTER            | FILTER              | FILTRE                   |
| 0813        | 900463963        | POMPA             | PUMP              | PUMPE               | POMPE                    |
| 0814        | 900458178        | SEMIGIUNTO        | HALF-COUPLING     | HALBKUPPLUNG        | DEMI-JOINT               |
| 0815        | 900458179        | GIUNTO            | COUPLING          | KUPPLUNG            | ACCOUPLLEMENT            |
| 0816        | 900430651        | MOTORE            | MOTOR             | MOTOR               | MOTEUR                   |
| 0817        | 900458086        | SERBATOIO         | TANK              | TANK                | RESERVOIR                |
| 0818        | 900449976        | TAPPO             | PLUG              | STOPFEN             | BOUCHON                  |



|      |           |           |                |             |           |
|------|-----------|-----------|----------------|-------------|-----------|
| 0213 | 900435425 | TUBO      | PIPE           | ROHR        | TUYAU     |
| 0214 | 900434243 | TUBO      | PIPE           | ROHR        | TUYAU     |
| 0216 | 900434241 | TUBO      | PIPE           | ROHR        | TUYAU     |
| 0219 | 900434242 | TUBO      | PIPE           | ROHR        | TUYAU     |
| 0220 | 900434478 | MANOMETRO | PRESSURE GAUGE | DRUCKMESSER | MANOMETRE |
| 0221 | 900334427 | TUBO      | PIPE           | ROHR        | TUYAU     |
| 0223 | 900434239 | TUBO      | PIPE           | ROHR        | TUYAU     |
| 0225 | 900434245 | TUBO      | PIPE           | ROHR        | TUYAU     |
| 0226 | 900436110 | TUBO      | PIPE           | ROHR        | TUYAU     |



|      |             |              |                |               |           |
|------|-------------|--------------|----------------|---------------|-----------|
| 0701 | 900219244   | PINZA        | PLIERS         | ZANGE         | PINCE     |
| 0703 | 900418785   | FERMO        | RETAINER       | ANSCHLAG      | ARRET     |
| 0704 | 900435443   | INGRASSATORE | LUBRICATOR     | SCHMIERNIPPEL | GRAISSEUR |
| 0709 | 900217617   | LEVA         | LEVER          | HEBEL         | LEVIER    |
| 0720 | 900236906   | LEVA         | LEVER          | HEBEL         | LEVIER    |
| 0721 | 900426388   | LEVA         | LEVER          | HEBEL         | LEVIER    |
| 0722 | 9005-300329 | PROLUNGA     | EXTENSION CORD | VERLAENGERUNG | RALLONGE  |

A large rectangular area containing 20 horizontal dotted lines, intended for writing or drawing.

A large rectangular area containing 20 horizontal dotted lines, intended for writing or drawing.

Il disegno è realizzato con tutti i particolari ma solo quelli codificati sono forniti come ricambi. L'Azienda si riserva la facoltà di apportare modifiche senza preavviso.



Via per Carpi, n°9 - 42015 Correggio (RE) ITALY  
Tel. 0522 639 111 - Telefax 0522 639 150  
info@corghi.com - www.corghi.com

The drawing shows all parts but only the coded parts are supplied as spares. The Company reserves the right to make modifications without prior notice.

UPT - Cod. 4-327491 - Rif. Poz. 901000406 - 10/05.